



Lifting your dreams

TRUCK LOADER CRANE

TM-ZE360/300MH

For Medium Size Vehicles



NOTE: Some specifications are subject to change.



Tadano Ltd.
KANDA SQUARE 18th Floor,
2-2-1 Kanda-Nishikicho, Chiyoda-ku, Tokyo 101-0054, Japan
Phone: +81-3-6811-7309
www.tadano.com E-mail: info@tadano.com



TM-ZE360/300MH-E-23-1-005-71-625-B4
Printed in Japan

IDEAL Cargo Crane, TADANO ZE

The ZE features all the Tadano Cargo Crane technologies that are recognized the world over.

The key development concepts remain:

EXCELLENT QUALITY,
EASY OPERATION AND EASY MAINTENANCE.

The TM-ZE360/300MH series, with a lifting capacity of 3.03 tons, and a choice of 4 different lengths of the boom are available to meet your lifting requirements.

Centralized Control Panels

Installed on both sides of the slewing post are the centralized control panels where operating switches and the lifting charts needed for crane operation are grouped together and arranged on a single panel.



Left-hand side

Right-hand side

Responding to Operator's Command

Equipped with an optimally matched, high-performance control valves, the operating levers provide improved responsiveness and fine-tuned control. Operation is fast or slow in accordance with operator's command.

The stainless rods between the left and right operation levers are provided as standard.



Load meter

Quicker Work with Advanced Outrigger Mechanism

The outrigger beams can be easily operated, using a grip to lock/release and extend/retract them.

The new lock system prevents the outriggers from swinging out during traveling.

A level gauge is provided as standard equipment.



New lock system

Level gauge



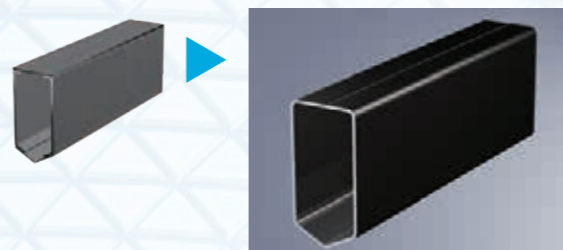
TM-ZE360MH series



TM-ZE300MH series

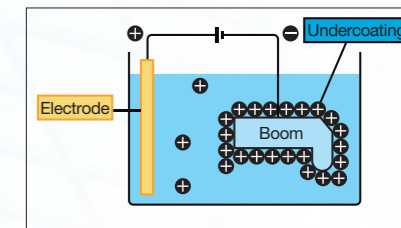
Stronger and Lighter Boom

Tadano's unique pentagonal boom is made of high-tensile steel and the section of boom has a structure of bended one piece steel plate for lighter boom weight and powerful lifting capability. Special valves enable smooth boom extension and retraction for smoother operation to reduce a shock when telescoping the boom.



Cationic Electro-deposition Coating

The crane is undercoated by Cationic electro-deposition method. The parts are dipped in cationic solution, and even the narrow inner booms and frames are thoroughly undercoated.



Greater Winch

The advantages of the enlarged winch drum and plunger motor are evident during start-up when maximum power is required. Re-hoisting with a load on the hook can also be handled with ease.

The winch reduction gear comes equipped with a failsafe automatic brake.

From the pitch of the drum grooves to the fitting of the guide sheave, cable winding has been improved in every detail so as to prevent the cable from winding off position.

Full Circle, Continuous Slewing

The newly designed compact slewing post improves performance providing Full circle, continuous rotation for more efficient operations.

Automatic slewing lock:

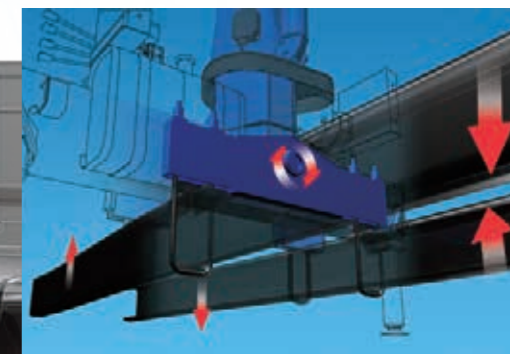
The boom is mechanically locked at the slewing post base which prevents boom rotation during traveling.



Three-Point Support System (Equalizer Crane Support)

Tadano's Equalizer Crane Support protects the truck frame from stress.

The crane is mounted to the truck chassis with the Equalizer Crane Support that evenly distributes the load to prevent excessive stress concentration at any one point.

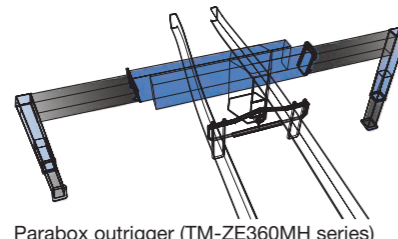
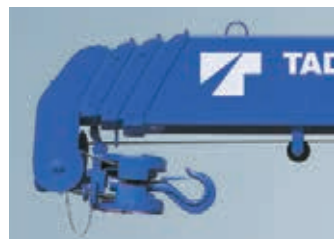


TM-ZE360MH Series



Hook-in System

The TM-ZE360MH features the "Hook-in" system to further enhance work efficiency. A pull of a lever and the crane hook is stowed automatically. No more manual fixing.

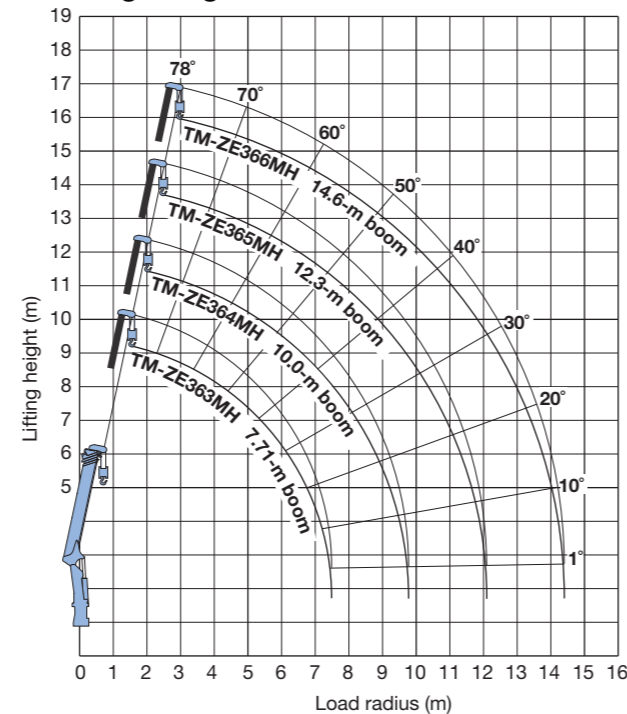


Parabox outrigger (TM-ZE360MH series)



TM-ZE364MH

Working Range



Notes for Working Range:

Boom deflection, and subsequent radius and boom angle change must be accounted for when applying load to hook.

Technical Specifications

MODEL	TM-ZE363MH	TM-ZE364MH	TM-ZE365MH	TM-ZE366MH
CRANE CAPACITY	3,030 kg at 2.6 m (4 parts of line)	3,030 kg at 2.5 m (4 parts of line)	3,030 kg at 2.3 m (4 parts of line)	3,030 kg at 2.3 m (4 parts of line)
BOOM	Fully hydraulic telescoping boom of pentagonal box construction		Fully powered partly synchronized telescoping boom of pentagonal box construction	
Number of sections	3	4	5	6
Length	3.28 m–7.71 m	3.34 m–10.0 m	3.52 m–12.3 m	3.65 m–14.6 m
Extending speed	4.43 m / 12 s	6.66 m / 14 s	8.78 m / 18 s	10.95 m / 19 s
Elevating range/speed	1° to 78° / 7.5 s			
Max. lifting height*	Approx. 9.2 m*	Approx. 11.4 m*	Approx. 13.7 m*	Approx. 15.9 m*
Max. load radius*	7.5 m*	9.8 m*	12.1 m*	14.4 m*
WINCH	Hydraulic motor driven. Spur gear speed reduction, provided with mechanical brake.			
Max. single line pull	7.45 kN {760 kgf}			
Max. single line speed	76 m/min. (at 4th layer)			
Wire rope (Diameter x length)	8 mm x 51 m	8 mm x 63 m	8 mm x 74 m	8 mm x 85 m
SLEWING	Hydraulic motor driven. Worm gear speed reduction. Continuous 360° full circle slewing on ball bearing slewing ring. Automatic slewing lock.			
Slewing speed	2.5 min ⁻¹ {rpm}			
OUTRIGGERS	Manually extended sliders and hydraulically extended jacks. Integral with crane frame			
Extension width	Max.: 4.2 m, Mid.: 3.6 m / 2.9 m, Min.: 2.0 m			
HYDRAULIC SYSTEM	Multiple control valves with integral safety valves			
Control valves	•Load meter •Load indicator •Over-winding alarm •Hoisting limiter •Hook safety latch •Hydraulic safety valves •Level gauge			
STANDARD SAFETY DEVICES	Gross vehicle mass (including crane mass) 8,000 to 17,000 kg			

* Boom deflection, and subsequent radius and boom angle change must be accounted for when applying load to hook.

Rated Lifting Capacities (With Empty Chassis)

Table A

TM-ZE363MH											
• 3.28-m/5.51-m boom											
Load radius (m)	2.6 and below	3.0	3.5	4.0	4.5	5.0	5.3				
Rated lifting capacity (kg)	3,030	2,480	1,930	1,480	1,230	1,030	980				
• 7.1-m boom											
Load radius (m)	2.7 and below	3.2	3.5	4.0	4.5	5.0	5.5	6.0	6.5	7.0	7.5
Rated lifting capacity (kg)	2,330	2,030	1,780	1,430	1,180	980	830	730	650	580	530

TM-ZE364MH											
• 3.34-m/5.57-m boom											
Load radius (m)	2.5 and below	3.0	3.5	4.0	4.5	5.0	5.37				
Rated lifting capacity (kg)	3,030	2,330	1,880	1,430	1,180	980	900				
• 7.78-m boom											
Load radius (m)	2.7 and below	3.2	3.5	4.0	4.5	5.0	5.5	6.0	6.5	7.0	7.58
Rated lifting capacity (kg)	2,330	2,030	1,730	1,430	1,180	980	830	730	650	580	520
• 10.0-m boom											
Load radius (m)	4.0 and below	5.0	6.0	7.0	8.0	9.0	9.8				
Rated lifting capacity (kg)	1,030	830	730	550	450	380	350				

TM-ZE365MH											
• 3.52-m/5.75-m boom											
Load radius (m)	2.3 and below	2.5	3.0	3.5	4.0	4.5	5.0	5.55			
Rated lifting capacity (kg)	3,030	2,780	2,280	1,880	1,430	1,180	980	850			
• 7.95-m boom											
Load radius (m)	2.7 and below	3.0	3.5	4.0	4.5	5.0	5.5	6.0	6.5	7.0	7.75
Rated lifting capacity (kg)	2,230	2,030	1,680	1,380	1,180	980	830	730	630	550	480
• 10.1-m boom											
Load radius (m)	4.0 and below	5.0	6.0	7.0	8.0	9.0	9.92				
Rated lifting capacity (kg)	1,030	830	730	550	450	380	330				
• 12.3-m boom											
Load radius (m)	4.5 and below	5.0	6.0	7.0	8.0	9.0	10.0	11.0	12.1		
Rated lifting capacity (kg)	760	630	480	400	350	310	280	250	230		

TM-ZE366MH											
• 3.65-m/5.87-m boom											
Load radius (m)	2.3 and below	2.5	3.0	3.5	4.0	4.5	5.0	5.67			
Rated lifting capacity (kg)	3,030	2,780	2,280	1,880	1,430	1,180	980	880			
• 8.07-m boom											
Load radius (m)	2.7 and below	3.0	3.5	4.0	4.5	5.0	5.5	6.0	6.5	7.0	7.87
Rated lifting capacity (kg)	2,230	2,030	1,680	1,380	1,180	980	830	700	600	530	450
• 10.2-m boom											
Load radius (m)	4.0 and below	5.0	6.0	7.0	8.0	9.0	10.05				
Rated lifting capacity (kg)	1,030	830	730	530	430	350	300				
• 12.4-m boom											
Load radius (m)	5.0 and below	6.0	7.0	8.0	9.0	10.0	11.0	12.22			
Rated lifting capacity (kg)	630	480	400	350	310	280	250	210			
• 14.6-m boom											
Load radius (m)	4.9 and below	6.0	7.0	8.0	9.0	10.0	11.0	12.0	13.0	14.4	
Rated lifting capacity (kg)	330	280	250	230	210	190	170	160	140	130	

Table D

TM-ZE363MH											
• 3.28-m/5.51-m boom											
Load radius (m)	2.6 and below	3.0	3.5	4.0	4.5	5.0	5.3				
Rated lifting capacity (kg)	3,030	2,580	2,180	1,880	1,680	1,480	1,380				
• 7.1-m boom											
Load radius (m)	2.7 and below	3.2	3.5	4.0	4.5	5.0	5.5	6.0	6.5	7.0	7.5
Rated lifting capacity (kg)	2,330	2,030	1,830	1,630	1,480	1,330	1,230	1,130	1,050	980	930
TM-ZE364MH											
• 3.34-m/5.57-m boom											
Load radius (m)	2.5 and below	3.0	3.5	4.0	4.5	5.0	5.37				
Rated lifting capacity (kg)	3,030	2,480	2,080	1,780	1,580	1,380	1,280				
• 7.78-m boom											
Load radius (m)	2.7 and below	3.2	3.5	4.0	4.5	5.0	5.5	6.0	6.5	7.0	7.58
Rated lifting capacity (kg)	2,330	2,030	1,830	1,630	1,480	1,330	1,230	1,130	1,030	950	880
• 10.0-m boom											
Load radius (m)	4.0 and below	5.0	6.0	7.0	8.0	9.0	9.8				
Rated lifting capacity (kg)	1,030	880	750	650	580	510	480				

Notes for Technical Specifications:

Operating speeds of the crane are guaranteed under the conditions that the pump delivery is 60 L/min.

Notes for Rated Lifting Capacities:

The mass of hook (30 kg), slings and all other lifting devices must be added to the mass of the load.

Table C

TM-ZE363MH											
• 3.28-m/5.51-m boom											
Load radius (m)	2.6 and below	3.0	3.5	4.0	4.5	5.0	5.3				
Rated lifting capacity (kg)	3,030	2,480	2,030	1,730	1,430	1,180	1,080				
• 7.1-m boom											
Load radius (m)	2.7 and below	3.2	3.5	4.0	4.5	5.0	5.5	6.0	6.5	7.0	7.5
Rated lifting capacity (kg)	2,330	2,030	1,780	1,480	1,280	1,130	1,030	880	780	700	650

TM-ZE364MH											
• 3.34-m/5.57-m boom											
Load radius (m)	2.5 and below	3.0	3.5	4.0	4.5	5.0	5.37				
Rated lifting capacity (kg)	3,030	2,330	1,980	1,680	1,380	1,130	1,030				
• 7.78-m boom											
Load radius (m)	2.7 and below	3.2	3.5	4.0	4.5	5.0	5.5	6.0	6.5	7.0	7.58
Rated lifting capacity (kg)	2,330	2,030	1,730	1,430	1,230	1,080	980	830	730	650	600
• 10.0-m boom											
Load radius (m)	4.0 and below	5.0	6.0	7.0	8.0	9.0	9.8				
Rated lifting capacity (kg)	1,030	830	730	630	530	460	430				

TM-ZE365MH											
• 3.52-m/5.75-m boom											
Load radius (m)	2.3 and below	2.5	3.0	3.5	4.0	4.5	5.0	5.55			
Rated lifting capacity (kg)	3,030	2,780	2,280	1,930	1,630	1,330	1,080	930			
• 7.95-m boom											
Load radius (m)	2.7 and below	3.0	3.5	4.0	4.5	5.0	5.5	6.0	6.5	7.0	7.75
Rated lifting capacity (kg)	2,230	2,030	1,680	1,380	1,180	1,050	930	800	700	630	550
• 10.1-m boom											
Load radius (m)	4.0 and below	5.0	6.0	7.0	8.0	9.0	9.92				
Rated lifting capacity (kg)	1,030	830	730	630	500	430	380				
• 12.3-m boom											
Load radius (m)	4.5 and below	5.0	6.0	7.0	8.0	9.0	10.0	11.0	12.1		
Rated lifting capacity (kg)	760	630	480	400	350	310	280	250	230		

TM-ZE366MH											
• 3.65-m/5.87-m boom											
Load radius (m)	2.3 and below	2.5	3.0	3.5	4.0	4.5	5.0	5.67			
Rated lifting capacity (kg)	3,030	2,780	2,280	1,930	1,630	1,330	1,080	880			
• 8.07-m boom											
Load radius (m)	2.7 and below	3.0	3.5	4.0	4.5	5.0	5.5	6.0	6.5	7.0	7.87
Rated lifting capacity (kg)	2,230	2,030	1,680	1,380	1,180	1,050	880	780	680	600	500
• 10.2-m boom											
Load radius (m)	4.0 and below	5.0	6.0	7.0	8.0	9.0	10.05				
Rated lifting capacity (kg)	1,030	830	730	600	480	400	330				
• 12.4-m boom											
Load radius (m)	5.0 and below	6.0	7.0	8.0	9.0	10.0	11.0	12.22			
Rated lifting capacity (kg)	630	480	400	350	310	280	250	230			
• 14.6-m boom											
Load radius (m)	4.9 and below	6.0	7.0	8.0	9.0	10.0	11.0	12.0	13.0	14.4	
Rated lifting capacity (kg)	330	280	250	230	210	190	170	160	140	130	

TM-ZE365MH											
• 3.52-m/5.75-m boom											
Load radius (m)	2.3 and below	2.5	3.0	3.5	4.0	4.5	5.0	5.55			
Rated lifting capacity (kg)	3,030	2,830	2,430	2,030	1,730	1,480	1,330	1,150			
• 7.95-m boom											
Load radius (m)	2.7 and below	3.0	3.5	4.0	4.5	5.0	5.5	6.0	6.5	7.0	7.75
Rated lifting capacity (kg)	2,330	2,130	1,830	1,630	1,480	1,330	1,150	1,050	950	850	730
• 10.1-m boom											
Load radius (m)	4.0 and below	5.0	6.0	7.0	8.0	9.0	9.92				
Rated lifting capacity (kg)	1,030	880	730	630	580	510	480				
• 12.3-m boom											
Load radius (m)	4.5 and below	5.0	6.0	7.0	8.0	9.0	10.0	11.0	12.1		
Rated lifting capacity (kg)	760	700	580	500	430	380	330	300	280		

TM-ZE366MH										
• 3.65-m/5.87-m boom										
Load radius (m)	2.3 and below	2.5	3.0	3.5	4.0	4.5	5.0	5.67		
Rated lifting capacity (kg)	3,030	2,830	2,380	1,980	1,680	1,450	1,280	1,080		

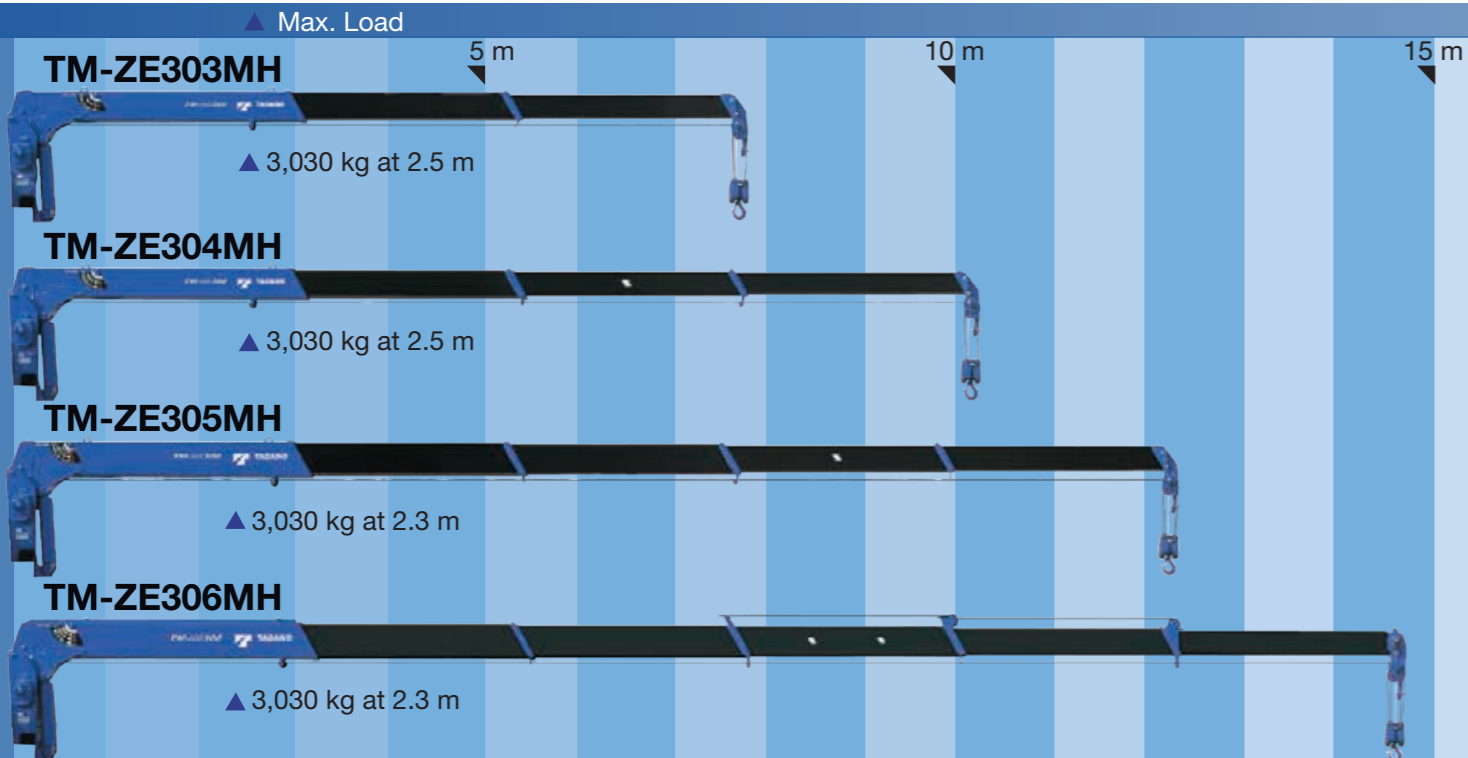
TM-ZE300MH Series



Hook-in System

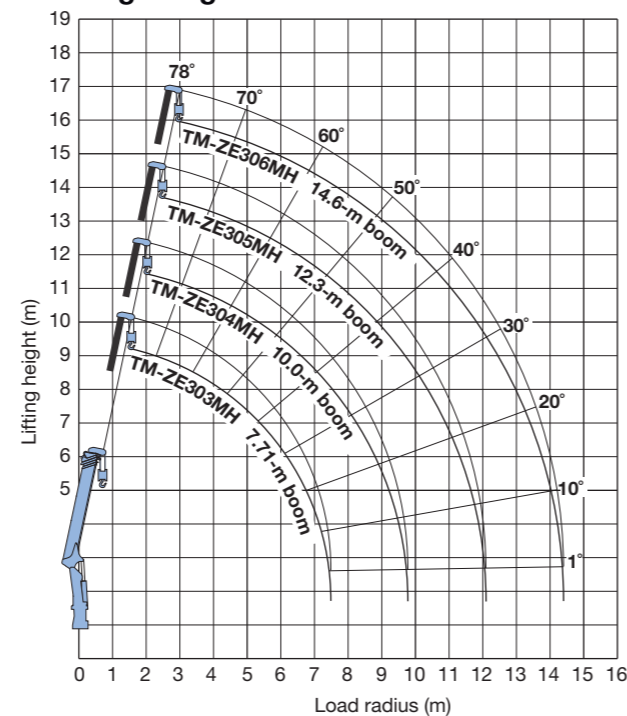
The TM-ZE300MH features the "Hook-in" system to further enhance work efficiency.

A pull of a lever and the crane hook is stowed automatically. No more manual fixing.



The cables and sheaves are all internal - for a clean, clutter-free appearance. Except 6 section boom

Working Range



Notes for Working Range:
Boom deflection, and subsequent radius and boom angle change must be accounted for when applying load to hook.



TM-ZE304MH

Technical Specifications

MODEL	TM-ZE303MH	TM-ZE304MH	TM-ZE305MH	TM-ZE306MH
CRANE CAPACITY	3,030 kg at 2.5 m (4 parts of line)	3,030 kg at 2.5 m (4 parts of line)	3,030 kg at 2.3 m (4 parts of line)	3,030 kg at 2.3 m (4 parts of line)
BOOM	Fully hydraulic telescoping boom of pentagonal box construction	Fully powered partly synchronized telescoping boom of pentagonal box construction		
Number of sections	3	4	5	6
Length	3.28 m-7.71 m	3.34 m-10.0 m	3.52 m-12.3 m	3.65 m-14.6 m
Extending speed	4.43 m / 12 s	6.66 m / 14 s	8.78 m / 18 s	10.95 m / 19 s
Elevating range/speed	1° to 78° / 7.5 s			
Max. lifting height*	Approx. 9.2 m*	Approx. 11.4 m*	Approx. 13.7 m*	Approx. 15.9 m*
Max. load radius*	7.5 m*	9.8 m*	12.1 m*	14.4 m*
WINCH	Hydraulic motor driven. Spur gear speed reduction, provided with mechanical brake.			
Max. single line pull	7.45 kN (760 kgf)			
Max. single line speed	76 m/min. (at 4th layer)			
Wire rope (Diameter x length)	8 mm x 51 m	8 mm x 63 m	8 mm x 74 m	8 mm x 85 m
SLEWING	Hydraulic motor driven. Worm gear speed reduction.			
Slewing speed	Continuous 360° full circle slewing on ball bearing slew ring. Automatic slewing lock. 2.5 min ⁻¹ (rpm)			
OUTRIGGERS	Manually extended sliders and hydraulically extended jacks. Integral with crane frame			
Extension width	Max.: 3.4 m, Mid.: 2.7 m, Min.: 2.0 m			
HYDRAULIC SYSTEM	Multiple control valves with integral safety valves			
Control valves	<ul style="list-style-type: none"> •Load meter •Load indicator •Over-winding alarm •Hoisting limiter •Hook safety latch •Hydraulic safety valves •Level gauge 			
STANDARD SAFETY DEVICES	Gross vehicle mass (including crane mass) 8,000 to 14,500 kg			
SUITABLE TRUCKS				

* Boom deflection, and subsequent radius and boom angle change must be accounted for when applying load to hook.

Rated Lifting Capacities (With Empty Chassis)

Table A

TM-ZE303MH										
● 3.28-m/5.51-m boom										
Load radius (m)	2.3 ^{and below}	2.7	3.0	3.5	4.0	4.5	5.0	5.3		
Rated lifting capacity (kg)	3,030	2,380	1,880	1,380	1,130	930	780	730		
● 7.71-m boom										
Load radius (m)	2.7 ^{and below}	3.2	3.5	4.0	4.5	5.0	5.5	6.0	6.5	7.0
Rated lifting capacity (kg)	2,330	1,650	1,380	1,080	880	730	630	580	530	480

TM-ZE304MH										
● 3.34-m/5.57-m boom										
Load radius (m)	2.3 ^{and below}	2.6	3.0	3.5	4.0	4.5	5.0	5.3		
Rated lifting capacity (kg)	3,030	2,580	1,880	1,380	1,080	880	730	680		
● 7.78-m boom										
Load radius (m)	2.7 ^{and below}	3.2	3.5	4.0	4.5	5.0	5.5	6.0	6.5	7.0
Rated lifting capacity (kg)	2,330	1,650	1,380	1,080	880	730	630	530	480	430
● 10.0-m boom										
Load radius (m)	4.0 ^{and below}	5.0	6.0	7.0	8.0	9.0	9.8			
Rated lifting capacity (kg)	1,030	730	530	430	330	280	250			

TM-ZE305MH										
● 3.52-m/5.75-m boom										
Load radius (m)	2.3 ^{and below}	2.5	3.0	3.5	4.0	4.5	5.0	5.5		
Rated lifting capacity (kg)	3,030	2,780	1,880	1,330	1,030	830	680	580		
● 7.95-m boom										
Load radius (m)	2.7 ^{and below}	3.0	3.5	4.0	4.5	5.0	5.5	6.0	6.5	7.0
Rated lifting capacity (kg)	2,230	1,850	1,330	1,030	830	680	580	480	430	380
● 10.1-m boom										
Load radius (m)	4.0 ^{and below}	5.0	6.0	7.0	8.0	9.0	9.92			
Rated lifting capacity (kg)	1,030	650	480	380	300	230	200			
● 12.3-m boom										
Load radius (m)	4.5 ^{and below}	5.0	6.0	7.0	8.0	9.0	10.0	11.0	12.1	
Rated lifting capacity (kg)	760	630	480	380	300	230	200	180	130	

TM-ZE306MH										
● 3.65-m/5.87-m boom										
Load radius (m)	2.3 ^{and below}	2.5	3.0	3.5	4.0	4.5	5.0	5.67		
Rated lifting capacity (kg)	3,030	2,780	1,880	1,330	980	830	680	580		
● 8.07-m boom										
Load radius (m)	2.7 ^{and below}	3.0	3.5	4.0	4.5	5.0	5.5	6.0	6.5	7.0
Rated lifting capacity (kg)	2,230	1,830	1,330	980	830	680	550	480	400	330
● 10.2-m boom										
Load radius (m)	3.9 ^{and below}	5.0	6.0	7.0	8.0	9.0	10.05			
Rated lifting capacity (kg)	1,030	650	480	330	280	230	180			
● 12.4-m boom										
Load radius (m)	5.0 ^{and below}	6.0	7.0	8.0	9.0	10.0	11.0	12.22		
Rated lifting capacity (kg)	630	480	330	280	230	180	130	100		
● 14.6-m boom										
Load radius (m)	4.9 ^{and below}	6.0	7.0	8.0	9.0	10.0	11.0	12.0	13.0	14.4
Rated lifting capacity (kg)	330	280	250	230	180	150	130	100	80	50

Table D

TM-ZE303MH										
● 3.28-m/5.51-m boom										
Load radius (m)	2.5 ^{and below}	3.0	3.5	4.0	4.5	5.0	5.3			
Rated lifting capacity (kg)	3,030	2,580	2,180	1,880	1,680	1,480	1,380			
● 7.71-m boom										
Load radius (m)	2.7 ^{and below}	3.2	3.5	4.0	4.5	5.0	5.5	6.0	6.5	7.0
Rated lifting capacity (kg)	2,330	2,030	1,830	1,630	1,460	1,330	1,230	1,130	1,050	980

TM-ZE304MH										
● 3.34-m/5.57-m boom										
Load radius (m)	2.5 ^{and below}	3.0	3.5	4.0	4.5	5.0	5.37			
Rated lifting capacity (kg)	3,030	2,480	2,080	1,780	1,580	1,380	1,280			
● 7.78-m boom										
Load radius (m)	2.7 ^{and below}	3.2	3.5	4.0	4.5	5.0	5.5	6.0	6.5	7.0
Rated lifting capacity (kg)	2,330	2,030	1,830	1,630	1,480	1,330	1,230	1,130	1,030	950
● 10.0-m boom										
Load radius (m)	4.0 ^{and below}	5.0	6.0	7.0	8.0	9.0	9.8			
Rated lifting capacity (kg)	1,030	880	750	650	580	510	480			

Notes for Technical Specifications:
Operating speeds of the crane are guaranteed under the conditions that the pump delivery is 60 L/min.

Notes for Rated Lifting Capacities:
The mass of hook (30 kg), slings and all other lifting devices must be added to the mass of the load.

Table C

TM-ZE303MH										
● 3.28-m/5.51-m boom										
Load radius (m)	2.5 ^{and below}	3.0	3.5	4.0	4.5	5.0	5.3			
Rated lifting capacity (kg)	3,030	2,180	1,580	1,250	1,050	900	830			
● 7.71-m boom										
Load radius (m)	2.7 ^{and below}	3.2	3.5	4.0	4.5	5.0	5.5	6.0	6.5	7.0
Rated lifting capacity (kg)	2,330	1,880	1,580	1,250	1,030	880	730	660	580	500

TM-ZE304MH										
● 3.34-m/5.57-m boom										
Load radius (m)	2.5 ^{and below}	3.0	3.5	4.0	4.5	5.0	5.37			
Rated lifting capacity (kg)	3,030	2,080	1,580	1,230	980	830	780			
● 7.78-m boom										
Load radius (m)	2.7 ^{and below}	3.2	3.5	4.0	4.5	5.0	5.5	6.0	6.5	7.0
Rated lifting capacity (kg)	2,330	1,830	1,580	1,230	980	830	730	630	530	450
● 10.0-m boom										
Load radius (m)	4.0 ^{and below}	5.0	6.0	7.0	8.0	9.0	9.8			
Rated lifting capacity (kg)	1,030	830	630	480	400	350	330			

TM-ZE305MH										
● 3.52-m/5.75-m boom										
Load radius (m)	2.3 ^{and below}	2.5	3.0	3.5	4.0	4.5	5.0	5.5		
Rated lifting capacity (kg)	3,030	2,780	2,080	1,530	1,180	980	830	680		
● 7.95-m boom										
Load radius (m)	2.7 ^{and below}	3.0	3.5	4.0	4.5	5.0	5.5	6.0	6.5	7.0
Rated lifting capacity (kg)	2,230	2,030	1,530	1,180	980	780	680	580	480	430
● 10.1-m boom										
Load radius (m)	4.0 ^{and below}	5.0	6.0	7.0	8.0	9.0	9.92			
Rated lifting capacity (kg)	1,030	780	580	430	350	300	280			
● 12.3-m boom										
Load radius (m)	4.5 ^{and below}	5.0	6.0	7.0	8.0	9.0	10.0	11.0	12.1	
Rated lifting capacity (kg)	760	630	480	400	350	280	250	230	200	

TM-ZE306MH										
● 3.65-m/5.87-m boom										
Load radius (m)	2.3 ^{and below}	2.5	3.0	3.5	4.0	4.5	5.0	5.67		
Rated lifting capacity (kg)	3,030	2,780	2,080	1,530	1,180	930	780	630		
● 8.07-m boom										
Load radius (m)	2.7 ^{and below}	3.0	3.5	4.0	4.5	5.0	5.5	6.0	6.5	7.0
Rated lifting capacity (kg)	2,230	2,030	1,530	1,130	930	780	630	530	480	430
● 10.2-m boom										
Load radius (m)	4.0 ^{and below}	5.0	6.0	7.0	8.0	9.0	10.05			
Rated lifting capacity (kg)	1,030	730	530	430	330	280	230			
● 12.4-m boom										
Load radius (m)	5.0 ^{and below}	6.0	7.0	8.0	9.0	10.0	11.0	12.22		
Rated lifting capacity (kg)	630	480	400	330	280	230	180	130		
● 14.6-m boom										
Load radius (m)	4.9 ^{and below}	6.0	7.0	8.0	9.0	10.0	11.0	12.0	13.0	14.4
Rated lifting capacity (kg)	330	280	250	230	210	190	170	130	130	80

TM-ZE305MH										
● 3.52-m/5.75-m boom										
Load radius (m)	2.3 ^{and below}	2.5	3.0	3.5	4.0	4.5	5.0	5.5		
Rated lifting capacity (kg)	3,030	2,830	2,430	2,030	1,730	1,480	1,330	1,150		
● 7.95-m boom										
Load radius (m)	2.7 ^{and below}	3.0	3.5	4.0	4.5	5.0	5.5	6.0	6.5	7.0
Rated lifting capacity (kg)	2,330	2,130	1,830	1,630	1,480	1,330	1,150	1,050	950	850

TM-ZE304MH										
● 3.34-m/5.57-m boom										
Load radius (m)	2.5 ^{and below}	3.0	3.5	4.0	4.5	5.0	5.37			
Rated lifting capacity (kg)	3,030	2,830	2,380	1,980	1,680	1,480	1,280	1,080		
● 7.78-m boom										
Load radius (m)	2.7 ^{and below}	3.0	3.5	4.0	4.5	5.0	5.5	6.0	6.5	7.0
Rated lifting capacity (kg)	2,									