

TADANO TRUCK CRANE

 MODEL : **GT-800EX**

(CARRIER : KF90 - 4)

GENERAL DATA

CRANE CAPACITY

80,000 kg at 2.5 m

BOOM

5-section, 11.5 m – 44.0 m

DIMENSION

Overall length	approx.	14,100 mm
Overall width	approx.	2,590 mm
Overall height	approx.	3,630 mm

MASS

	Kilograms		
	GVW	Front	Rear
Base machine with 400L fuel and no counterweight	40,139	19,795	20,344
1. Auxiliary hoist with 133m of 19mm	-766	241	-1,007
2. 5.6 ton hook ball	-132	-154	22
3. Top jib (7.8m)	-306	-210	-96
4. Base jib (9.9m)	-872	-993	121
5. Single top (Auxiliary boom sheave)	-50	-88	38
6. Counter weight 2.7t on upper	2,648	-1,234	3,882
7. Counter weight 2.7t on upper + 2.4t to carrier deck	5,080	557	4,523
8. Counter weight 2.7t on upper + 2.4t + 2.3t to carrier deck	7,413	2,275	5,138
Option: 1. Hot water cab heater and air conditioning in upper cab	97	9	88

PERFORMANCE

Max. travelling speed	computed	105.3km/h
Gradeability (tan θ)	computed	64.8%

Specifications are subject to change without notice.

CRANE SPECIFICATIONS

<u>MODEL</u>	GT-800EX
<u>CAPACITY</u>	80,000 kg at 2.5 m
<u>BOOM</u>	<p>Five-section full power partially synchronized telescoping boom of round hexagonal box construction with 7 sheaves at boom head. The synchronization system consists of 2 telescope cylinders, extension cables and retraction cables. Selection of 2 boom telescoping modes.</p> <p>Hydraulic cylinders fitted with holding valves.</p> <p>Fully retracted length -----11.5 m</p> <p>Fully extended length ----- 44.0 m</p> <p>Extension speed -----32.5 m in 145 s</p>
<u>JIB</u>	<p>Two-staged swingaround boom extension. Triple offset (3.5°/ 25°/ 45°) type. Stores alongside base boom section. Assistant cylinders for mounting and stowing. Single sheave at jib head.</p> <p>Length-----9.9 m and 17.7 m</p>
<u>SINGLE TOP (AUXILIARY BOOM SHEAVE)</u>	<p>Single sheave.</p> <p>Mounted to main boom head for single line work.</p>
<u>ELEVATION</u>	<p>By a double-acting hydraulic cylinder, fitted with holding valve.</p> <p>Elevation speed----- -2° to 80° in 77 s</p>
<u>HOIST – Main winch</u>	<p>Variable speed type with grooved drum driven by hydraulic axial piston motor through winch speed reducer. Power load lowering and hoisting.</p> <p>Equipped with automatic brake (Neutral brake) and counterbalance valve.</p> <p>Controlled independently of auxiliary winch.</p> <p>Single line pull ----- 54.9 kN {5,600 kgf}</p> <p>Single line speed ----- 143 m/min. (at the 4th layer)</p> <p>Wire rope -----Spin-resistant type</p> <p>Diameter x length -----19 mm x 243 m</p>
<u>HOOK BLOCK (optional)- 80 t capacity</u>	8 sheaves, swivel type hook with safety latch.
<u>HOOK BLOCK (optional)- 40 t capacity</u>	4 sheaves, swivel type hook with safety latch.
<u>HOIST– Auxiliary winch</u>	<p>Variable speed type with grooved drum driven by hydraulic axial piston motor through winch speed reducer. Power load lowering and hoisting.</p> <p>Equipped with automatic brake (Neutral brake) and counterbalance valve.</p> <p>Controlled independently of main winch.</p> <p>Single line pull ----- 54.9 kN {5,600 kgf}</p> <p>Single line speed ----- 125 m/min. (at the 2nd layer)</p> <p>Wire rope ----- Spin-resistant type</p> <p>Diameter x length -----19 mm x 133 m</p>
<u>HOOK BLOCK– 5.6 t capacity</u>	Swivel hook with safety latch for single line use.

SWING

Hydraulic axial piston motor driven through planetary swing speed reducer. Continuous 360° full circle swing on ball bearing slew ring. Equipped with manually locked/released swing brake.
Swing speed ----- 1.7 min⁻¹{rpm}

HYDRAULIC SYSTEM

Pumps ----- Two variable piston pumps for telescoping, elevating and winches.
Tandem gear pump for swing and optional equipment.
Control valves ----- Multiple valves actuated by pilot pressure with integral pressure relief valves.
Oil pressure appears on AML display for main circuit.
Circuit ----- Equipped with air cooled type oil cooler.
Oil pressure appears on AML display for main circuit.
Hydraulic oil tank capacity ----- approx. 700 liters
Filters ----- Return line filter

CRANE CONTROL

By 4 control levers for swing, boom hoist, main winch, boom telescoping or auxiliary winch with 2 control pedals for boom hoist and boom telescoping based on ISO standard layout. Control lever stands can change neutral positions and tilt for easy access to cab.

CAB

One sided one-man type, steel construction with sliding door access and tinted safety glass windows opening at side. Door window is powered control.
Operator's 3 way adjustable seat with headrest and armrest.
Hot water cab heater and air conditioning. (Optional)

TADANO Automatic
Moment Limiter
(Model : AML-L)

Main unit in crane cab gives audible and visual warning of approach to overload. Automatically cuts out crane motions before overload. With working range (load radius and/or boom angle and/or tip height and/or swing range) limit function. Nine functions are constantly displayed.
Either moment as percentage or main hydraulic pressure
Either boom angle or moment %
Either boom length or potential hook height
Either actual load radius or swing angle
Actual hook load
Permissible load
Either jib offset angle or number of parts of line of rope
Boom position indicator
Outrigger position indicator

OUTRIGGERS

Hydraulically operated H-type outriggers. Each outrigger controlled simultaneously or independently from either side of carrier. Equipped with sight level gauge. Floats mounted integrally with the jacks retract to within vehicle width.
All cylinders fitted with pilot check valves.
Crane operation with different extended length of each outrigger. Equipped with extension width detector for each outrigger.
Extended width
Fully ----- 7,200 mm
Middle ----- 4,800 mm
Minimum ---- 2,080 mm
Float size (Diameter) --- 500 mm

<u>FRONT JACK</u>	A fifth hydraulically operated outrigger jack. Mounted to the front frame of carrier to permit 360° lifting capabilities. Hydraulic cylinder fitted with pilot check valve. Equipped with front jack extension detector. Float size (Diameter) --- 400 mm
<u>COUNTER WEIGHT</u>	Pinned to superstructure frame. Hydraulically controlled counterweight. Total mass of counterweights : 5.1 t (2.7 + 2.4 t) 7.4 t (5.1 + 2.3 t) 15.9 t (7.4 + 4.9 + 3.6 t) 17.9 t (15.9 + 1.0 x 2 t)
<u>STANDARD EQUIPMENT</u>	Automatic moment limiter (AML) External lamp (AML) Pendant type over-winding cutout Winch automatic fail-safe brake Cable follower Hook safety latch Pilot check valves Holding valves Counterbalance valves Hydraulic pressure relief valves Swing brake Swing lock (360° positive swing lock) Boom angle indicator Boom elevation foot pedal Boom telescoping foot pedal Outrigger extension width detector Front jack extension detector Front jack overload alarm Hydraulic oil cooler Front windshield wiper and washer Roof window wiper and washer Power window (Cab door) 3way adjustable cloth seat with headrest and armrest Cab floor mat Sun visor (Front and roof) Counterweight removable equipment Hydraulic circuit for dolly (Elevation, swing and swing brake)
<u>OPTIONAL EQUIPMENT</u>	Winch drum rotation indicator (thumper type) Winch drum mirror Hot water cab heater and air conditioner Hook block – 80t capacity (8 sheaves, swivel type with safety latch. Mass : approx.950 kg) Hook block – 40t capacity (4 sheaves, swivel type with safety latch. Mass : approx.470 kg) Hook block tie down front bumper Outrigger controls and sight level gauge located superstructure cab

NOTE : Each crane motion speed is based on unladen conditions.

CARRIER SPECIFICATIONS

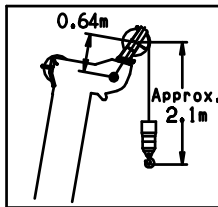
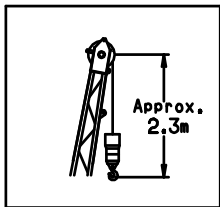
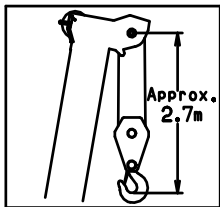
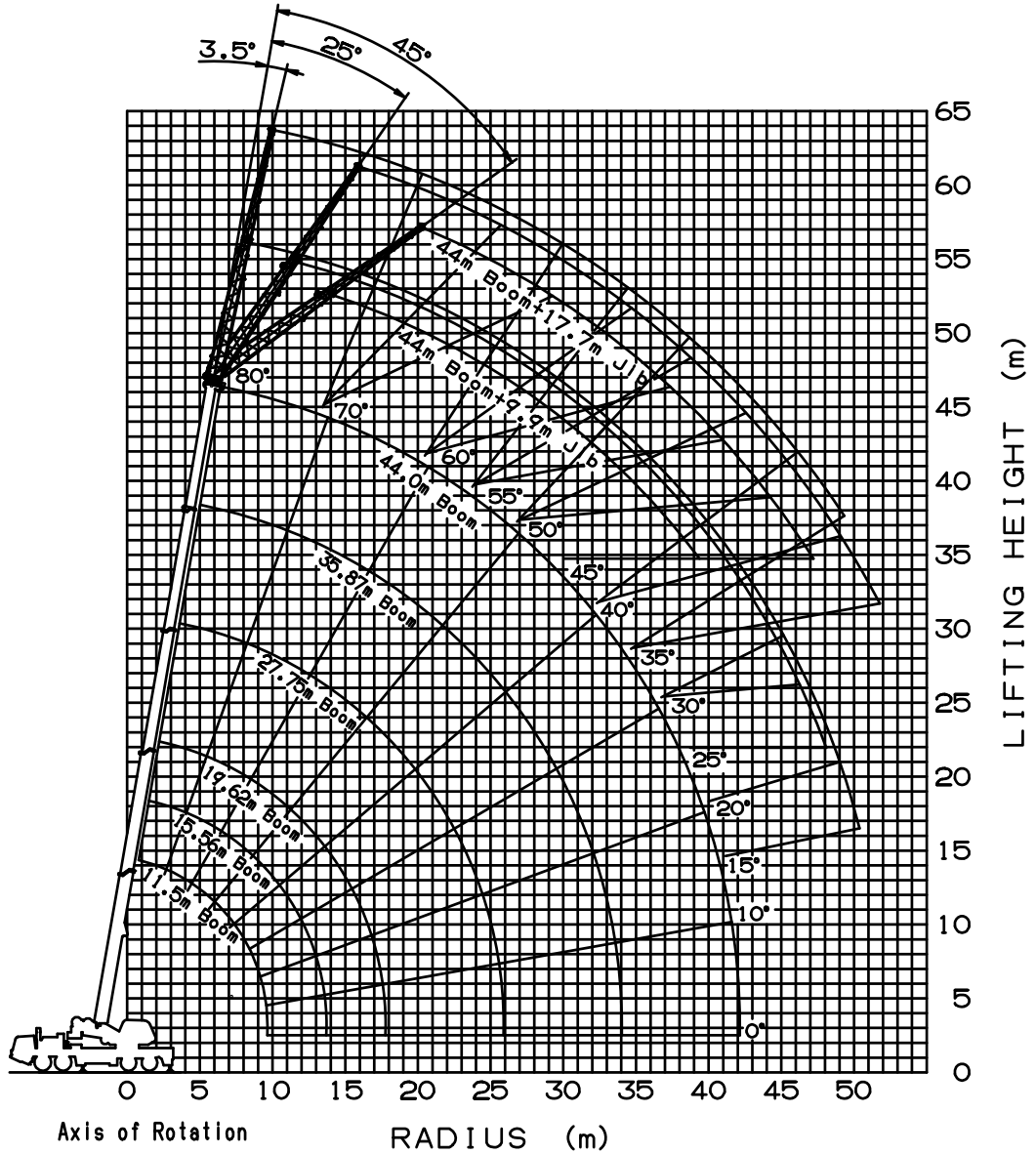
<u>MANUFACTURER</u>	FAUN GmbH
<u>MODEL</u>	KF90 - 4 ----- Left-hand steering , 8 x 4
<u>ENGINE</u>	Model ----- Daimler Chrysler OM460LA [EPA Tier3 / EUROMOT Stage IIIA] Type ----- 4 cycle, turbo charged and inter cooled. Piston displacement ---12,816 cm ³ Bore x Stroke ----- 128 mm x 166mm Max. output ----- 360 kW at 1,800 min ⁻¹ Max. torque -----2,200 N-m at 1,300 min ⁻¹
<u>TRANSMISSION</u>	ZF-AS-Tronic 12AS2302 mechanical transmission with electro-pneumatically actuated dry-type clutch and automatic gear shifting with 12 forward gears and 2 reverse gears. Power / Economy mode.
<u>TRANSFER CASE</u>	Two stage
<u>AXLES</u>	Front ----- Full floating type, steering axle. Rear ----- Full floating type, driving axle. All driven axles with differential locks.
<u>STEERING</u>	ZF-Servocom, dual circuit hydraulic and mechanical steering of both front axles. Transfer-mounted emergency steering pump.
<u>SUSPENSION</u>	Front ----- Walking beam with air bags and shock absorbers. Rear ----- Walking beam with air bags and shock absorbers.
<u>BRAKE SYSTEM</u>	Service ----- ABS system. Full air brakes on all wheels. Dual air line system. Parking / Emergency ----- Spring loaded brake on rear 4-wheel controlled by knob of spring brake valve. Auxiliary ----- Constant throttle system with exhaust flap brake.
<u>ELECTRIC SYSTEM</u>	24 V DC. 2 batteries of 12 V
<u>FUEL TANK CAPACITY</u>	400 liters
<u>CAB</u>	One sided one-man cab of composite structure (steel sheet metal and fiberglass). Driver seat adjustable and air-suspended with headrest and 3 point safety belt.
<u>TIRES</u>	Front -----445/65R22.5, Single x 4 Rear -----315/80R22.5, Dual x 4 Spare -----445/65R22.5, Single x 1
<u>TURN RADIUS</u>	Min. turning radius (at center of extreme outer tire) -----12.7 m

STANDARD EQUIPMENT

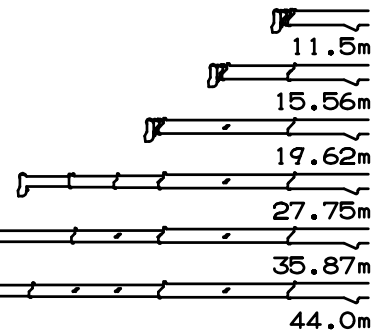
Anti-lock system (ABS)
Cruise control
Spare tire 445 / 65R22.5
Towing hooks (Front, Eye type)
Carrier mounted storage box
Trailer coupling device
Windshield wiper and washer
3 point type seat belt
Sun visor
Tilt telescoping steering wheel
3 way adjustable air-cushioned seat
Tachometer / Speedometer
Hourmeter / Tachograph
Reversing signal (Back-up alarm)
Adjustment and heating rearview mirror
Hot water cab heater with defroster
Air conditioning
Swing brake pressure drop buzzer for dolly
Engine over-run buzzer
Air cleaner dust indicator
Air dryer
Daytime running lights
Rotary beacon
Extension exhaust pipe

WORKING RANGE CHART

Telescoping mode I

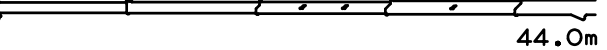


Boom Length



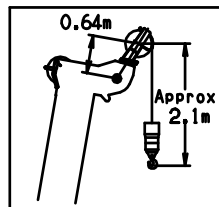
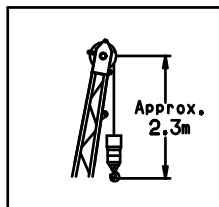
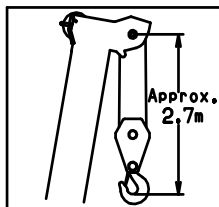
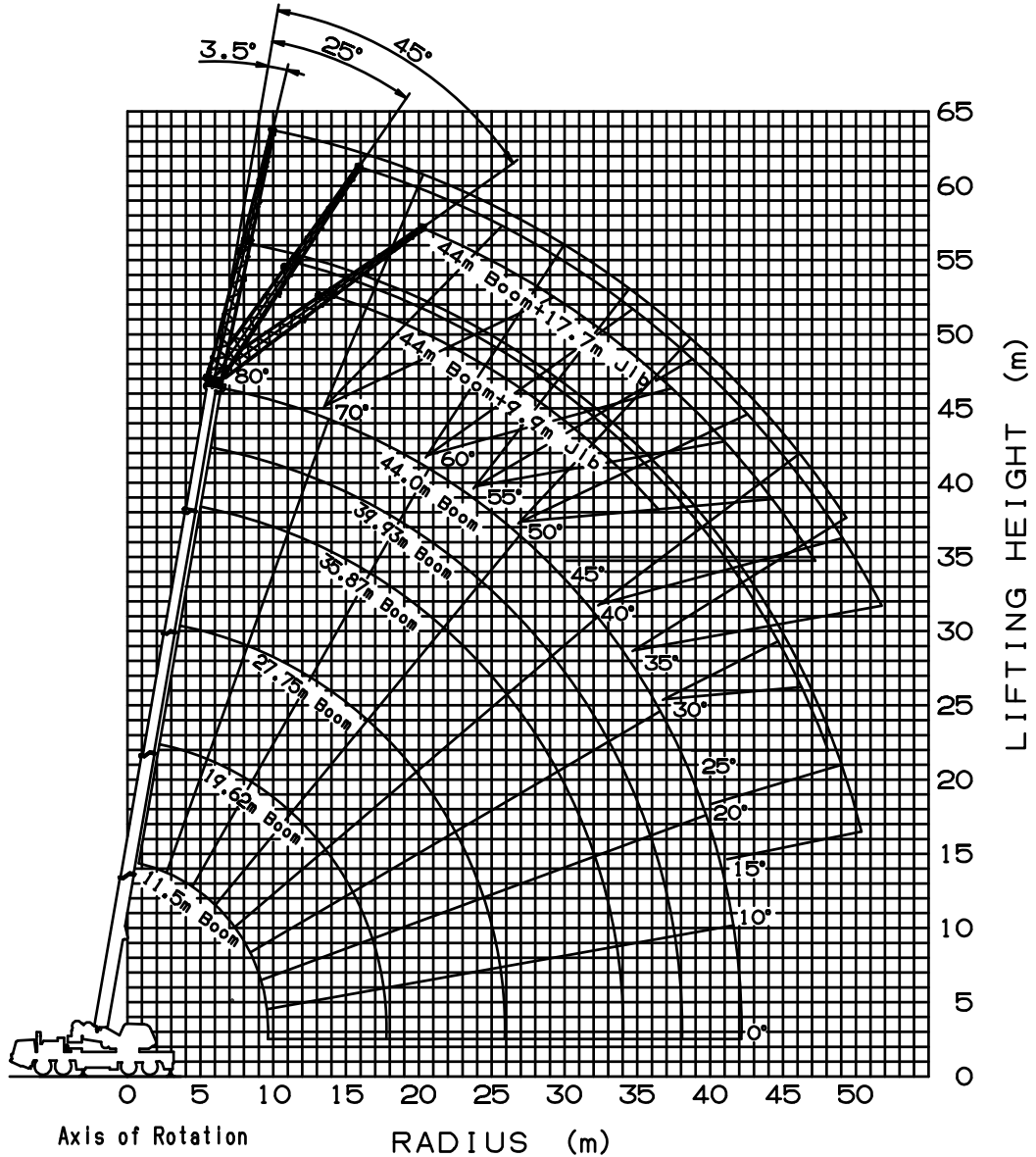
NOTE:1. Boom and jib geometry shown are for unloaded condition and machine standing level on firm supporting surface.

Boom deflection and subsequent radius and boom angle change must be accounted for when applying load to hook.

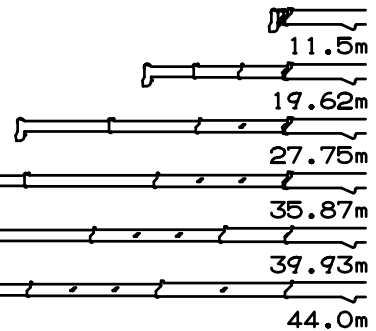


WORKING RANGE CHART

Telescoping mode I



Boom Length



NOTE: 1. Boom and jib geometry shown are for unloaded condition and machine standing level on firm supporting surface.
 Boom deflection and subsequent radius and boom angle change must be accounted for when applying load to hook.

RATED LIFTING CAPACITY TABLE

NOTES

■ The performances of the rated lifting capacities are classified as shown in the table below.

- Boom lift , Single top lift

Counter weight Outrigger extension width	17.9 t	15.9 t	7.4 t	5.1 t	0 t
7.2 m	A	B	C	D	E
4.8 m	F	G	H	I	J
2.08 m			K*	L*	M*

* : **K, L, M** performance is available when the boom length is 11.5 m.

- Jib lift

Counter weight Outrigger extension width	17.9 t	15.9 t	7.4 t	5.1 t	0 t
7.2 m	JA	JB	JC	JD	JE
4.8 m	JF	JG	JH		
2.08 m					

A

GT-800EX RATED LIFTING CAPACITIES

ON OUTRIGGERS FULLY EXTENDED 7.2m																				
COUNTER WEIGHT 17.9t																				
(UNIT:x1,000kg)																				
B \ A	11.5m		15.56m		19.62m				27.75m				35.87m				39.93m		44.0m	
	C		C		C	C		C	C		C	C		C	C		C	C		
2.5	71	80.0																		
3.0	68	71.9	75	47.0	78	40.0	78	20.0												
3.5	66	65.3	73	47.0	77	40.0	77	20.0												
4.0	63	59.9	71	47.0	75	40.0	75	20.0												
4.5	60	55.2	69	47.0	74	40.0	74	20.0	79	20.0	79	14.0								
5.0	57	50.4	67	47.0	72	38.4	72	20.0	78	20.0	78	14.0								
5.5	54	45.6	64	45.2	70	35.6	70	20.0	77	20.0	77	14.0								
6.0	50	41.5	62	41.2	69	33.2	69	20.0	76	20.0	76	14.0	80	14.0	80	8.0				
6.5	47	38.1	60	37.7	67	31.0	67	20.0	75	20.0	75	14.0	79	14.0	79	8.0				
7.0	43	35.1	58	34.8	66	29.1	66	20.0	74	20.0	74	14.0	78	14.0	78	8.0				
8.0	35	30.2	53	29.9	62	25.8	62	20.0	72	20.0	72	13.8	77	14.0	77	8.0	79	8.0	80	8.0
9.0	23	20.8	49	26.1	59	23.1	59	20.0	70	18.1	70	12.4	75	14.0	75	8.0	77	8.0	79	8.0
10.0			43	22.8	55	20.9	55	20.0	67	16.4	67	11.3	73	13.7	73	8.0	76	8.0	77	8.0
11.0			37	19.3	52	18.9	52	20.0	65	15.0	65	10.4	72	12.5	72	8.0	74	8.0	76	8.0
12.0			30	16.6	48	16.2	48	18.7	63	13.8	63	9.5	70	11.5	70	8.0	73	8.0	74	8.0
13.0			20	12.5	43	14.0	43	16.5	60	12.7	60	8.8	68	10.5	68	8.0	71	8.0	73	8.0
14.0					39	12.2	39	14.6	58	11.8	58	8.2	66	9.7	66	7.4	70	8.0	72	8.0
16.0					27	9.4	27	11.7	53	10.2	53	7.1	63	8.4	63	6.4	67	7.1	69	7.4
18.0									47	8.6	47	6.3	59	7.3	59	5.6	63	6.2	66	6.4
20.0									41	7.0	41	5.6	55	6.4	55	4.9	60	5.4	63	5.6
22.0									33	5.8	33	5.0	51	5.7	51	4.3	56	4.8	60	4.9
24.0									24	4.8	24	4.5	47	5.0	47	3.9	53	4.3	57	4.4
26.0													42	4.5	42	3.5	49	3.8	54	3.9
28.0													36	3.8	36	3.1	45	3.4	50	3.4
30.0													30	3.2	30	2.9	40	3.1	46	3.1
32.0													22	2.7	22	2.6	35	2.8	43	2.7
34.0																	29	2.5	38	2.4
36.0																	22	2.3	34	2.1
38.0																			28	1.8
40.0																			21	1.5
D	0°																		10°	
Telescoping conditions (%)																				
Telescoping mode	I,II	I	I	II	I	II	I	II	I	II	I	II	I	II	I	II	I	II	I,II	
2nd boom	0	50	100	0	100	0	100	0	100	0	100	0	50	100	0	100	0	50	100	
3rd boom	0	0	0	33	33	66	66	100	100	100	100	100	100	100	100	100	100	100	100	
4th boom	0	0	0	33	33	66	66	100	100	100	100	100	100	100	100	100	100	100	100	
Top boom	0	0	0	33	33	66	66	100	100	100	100	100	100	100	100	100	100	100	100	

- A: Boom length (m)
- B: Load radius (m)
- C: Loaded boom angle (°)
- D: Minimum boom angle (°) for indicated length (no load)

JA

GT-800EX RATED LIFTING CAPACITIES

ON OUTRIGGERS FULLY EXTENDED 7.2m COUNTER WEIGHT 17.9t													
Boom Angle in Degree	44.0m Boom + 9.9m Jib						Boom Angle in Degree	44.0m Boom + 17.7m Jib					
	3.5° Tilt		25° Tilt		45° Tilt			3.5° Tilt		25° Tilt		45° Tilt	
	R	W	R	W	R	W		R	W	R	W	R	W
80°	9.8	4.50	13.5	4.00	15.8	3.67	80°	12.2	2.67	19.6	2.44	22.5	1.54
75°	15.2	4.50	18.5	3.94	20.2	3.29	75°	18.2	2.67	25.1	2.19	27.4	1.54
70°	20.1	4.40	22.9	3.43	24.4	2.97	70°	23.9	2.67	30.0	1.89	32.0	1.54
65°	24.4	3.59	27.1	3.01	28.2	2.70	65°	28.9	2.24	34.4	1.66	36.0	1.42
60°	28.5	2.88	30.8	2.61	32.0	2.47	60°	33.2	1.90	38.7	1.48	39.6	1.31
55°	32.3	2.31	34.4	2.14	35.4	2.12	55°	36.9	1.56	42.7	1.34	43.0	1.23
50°	35.7	1.87	37.5	1.77	38.4	1.77	50°	41.5	1.22	46.3	1.16	46.0	1.14
45°	38.7	1.53	40.5	1.46	41.1	1.48	45°	45.1	0.96	49.1	0.92	49.1	0.92
40°	41.8	1.26	43.3	1.22			40°	48.5	0.73	52.1	0.71		
35°	44.2	1.05	45.4	1.03			35°	51.5	0.54	54.6	0.53		
30°	46.3	0.86	47.5	0.84									
25°	48.5	0.68	49.4	0.66									
20°	50.0	0.54											
15°	51.2	0.45											

ON OUTRIGGERS FULLY EXTENDED 7.2m COUNTER WEIGHT 17.9t													
Boom Angle in Degree	35.87m Boom (telescoping mode I) + 9.9m Jib						Boom Angle in Degree	35.87m Boom (telescoping mode I) + 17.7m Jib					
	3.5° Tilt		25° Tilt		45° Tilt			3.5° Tilt		25° Tilt		45° Tilt	
	R	W	R	W	R	W		R	W	R	W	R	W
80°	7.8	5.60	11.2	4.67	13.5	3.76	80°	10.0	3.58	16.7	2.58	20.3	1.67
75°	12.1	5.60	15.4	4.53	17.2	3.61	75°	15.1	3.58	21.3	2.36	24.4	1.67
70°	16.2	5.60	19.1	3.99	20.6	3.37	70°	19.8	3.24	25.5	2.12	28.1	1.65
65°	19.9	4.74	22.6	3.57	23.7	3.10	65°	24.1	2.70	29.4	1.91	31.4	1.57
60°	23.4	4.12	25.8	3.22	26.8	2.89	60°	28.2	2.31	33.2	1.73	34.4	1.49
55°	26.7	3.62	28.9	2.95	29.7	2.73	55°	32.0	2.02	36.3	1.58	37.5	1.42
50°	29.6	3.20	31.7	2.74	32.3	2.60	50°	35.7	1.80	39.3	1.47	39.9	1.37
45°	32.3	2.76	34.1	2.58	34.7	2.50	45°	38.7	1.63	42.1	1.38	42.4	1.33
40°	34.7	2.42	36.6	2.31			40°	41.8	1.50	44.5	1.31		
35°	37.2	2.11	38.4	2.03			35°	44.2	1.39	46.6	1.27		
30°	39.0	1.79	40.2	1.74			30°	46.3	1.17	48.5	1.14		
25°	40.8	1.54	41.8	1.51			25°	48.5	0.99	49.7	0.97		
20°	42.1	1.36					20°	49.7	0.85				
15°	43.3	1.24					15°	50.9	0.76				

ON OUTRIGGERS FULLY EXTENDED 7.2m COUNTER WEIGHT 17.9t													
Boom Angle in Degree	35.87m Boom (telescoping mode II) + 9.9m Jib						Boom Angle in Degree	35.87m Boom (telescoping mode II) + 17.7m Jib					
	3.5° Tilt		25° Tilt		45° Tilt			3.5° Tilt		25° Tilt		45° Tilt	
	R	W	R	W	R	W		R	W	R	W	R	W
80°	7.7	5.00	11.6	4.67	13.9	3.76	80°	10.2	2.85	17.0	2.58	20.4	1.67
75°	12.3	5.00	15.7	4.20	17.6	3.47	75°	15.5	2.85	21.7	2.32	24.6	1.67
70°	16.5	4.79	19.4	3.64	20.9	3.12	70°	20.2	2.85	25.8	2.00	28.2	1.62
65°	20.1	3.89	22.8	3.19	24.1	2.83	65°	24.5	2.39	29.7	1.76	31.4	1.49
60°	23.5	3.21	26.1	2.79	27.2	2.59	60°	28.5	2.03	33.2	1.57	34.7	1.38
55°	26.7	2.68	29.1	2.42	30.0	2.34	55°	32.3	1.76	36.6	1.41	37.5	1.29
50°	29.7	2.26	31.7	2.09	32.6	2.06	50°	35.7	1.49	39.6	1.29	40.2	1.22
45°	32.3	1.96	34.4	1.84	34.7	1.83	45°	38.7	1.26	42.4	1.17	42.7	1.15
40°	35.1	1.72	36.6	1.63			40°	41.8	1.09	44.5	1.02		
35°	37.2	1.53	38.7	1.48			35°	44.2	0.95	46.6	0.91		
30°	39.0	1.39	40.2	1.35			30°	46.3	0.84	48.5	0.82		
25°	40.8	1.28	41.8	1.26			25°	48.5	0.76	49.7	0.76		
20°	42.1	1.20					20°	50.0	0.70				
15°	43.3	1.15					15°	51.2	0.67				

R: Load radius (m)
W: Rated lifting capacity (Unit: x 1,000kg)

B

GT-800EX RATED LIFTING CAPACITIES

ON OUTRIGGERS FULLY EXTENDED 7.2m																				
COUNTER WEIGHT 15.9t																				
(UNIT:x1,000kg)																				
B \ A	11.5m		15.56m		19.62m				27.75m				35.87m				39.93m		44.0m	
	C		C		C		C		C		C		C		C		C			
3.0	68	71.9	75	47.0	78	40.0	78	20.0												
3.5	66	65.3	73	47.0	77	40.0	77	20.0												
4.0	63	59.9	71	47.0	75	40.0	75	20.0												
4.5	60	55.1	69	47.0	74	40.0	74	20.0	79	20.0	79	14.0								
5.0	57	49.4	67	47.0	72	38.4	72	20.0	78	20.0	78	14.0								
5.5	54	44.7	64	44.3	70	35.6	70	20.0	77	20.0	77	14.0								
6.0	50	40.7	62	40.3	69	33.2	69	20.0	76	20.0	76	14.0	80	14.0	80	8.0				
6.5	47	37.3	60	37.0	67	31.0	67	20.0	75	20.0	75	14.0	79	14.0	79	8.0				
7.0	43	34.4	58	34.0	66	29.1	66	20.0	74	20.0	74	14.0	78	14.0	78	8.0				
8.0	35	29.6	53	29.3	62	25.8	62	20.0	72	20.0	72	13.8	77	14.0	77	8.0	79	8.0	80	8.0
9.0	23	20.8	49	25.5	59	23.1	59	20.0	70	18.1	70	12.4	75	14.0	75	8.0	77	8.0	79	8.0
10.0			43	21.4	55	20.9	55	20.0	67	16.4	67	11.3	73	13.7	73	8.0	76	8.0	77	8.0
11.0			37	18.1	52	17.7	52	20.0	65	15.0	65	10.4	72	12.5	72	8.0	74	8.0	76	8.0
12.0			30	15.5	48	15.1	48	17.6	63	13.8	63	9.5	70	11.5	70	8.0	73	8.0	74	8.0
13.0			20	12.5	43	13.0	43	15.5	60	12.7	60	8.8	68	10.5	68	8.0	71	8.0	73	8.0
14.0					39	11.3	39	13.7	58	11.8	58	8.2	66	9.7	66	7.4	70	8.0	72	8.0
16.0					27	8.7	27	11.0	53	10.0	53	7.1	63	8.4	63	6.4	67	7.1	69	7.4
18.0									47	8.0	47	6.3	59	7.3	59	5.6	63	6.2	66	6.4
20.0									41	6.4	41	5.6	55	6.4	55	4.9	60	5.4	63	5.6
22.0									33	5.2	33	5.0	51	5.7	51	4.3	56	4.8	60	4.9
24.0									24	4.3	24	4.5	47	4.9	47	3.9	53	4.3	57	4.4
26.0													42	4.1	42	3.5	49	3.8	54	3.9
28.0													36	3.4	36	3.1	45	3.4	50	3.4
30.0													30	2.8	30	2.9	40	3.1	46	3.1
32.0													22	2.3	22	2.6	35	2.8	43	2.6
34.0																	29	2.5	38	2.2
36.0																	22	2.2	34	1.8
38.0																			28	1.5
40.0																			21	1.2
D	0°																		11°	
Telescoping conditions (%)																				
Telescoping mode	I, II	I	I	II	I	II	I	II	I	II	I	II	I	II	I	II	I	II	I, II	
2nd boom	0	50	100	0	100	0	100	0	100	0	100	0	100	0	50	100	100	100	100	
3rd boom	0	0	0	33	33	66	66	100	100	100	100	100	100	100	100	100	100	100	100	
4th boom	0	0	0	33	33	66	66	100	100	100	100	100	100	100	100	100	100	100	100	
Top boom	0	0	0	33	33	66	66	100	100	100	100	100	100	100	100	100	100	100	100	

- A: Boom length (m)
- B: Load radius (m)
- C: Loaded boom angle (°)
- D: Minimum boom angle (°) for indicated length (no load)

JB

GT-800EX RATED LIFTING CAPACITIES

ON OUTRIGGERS FULLY EXTENDED 7.2m COUNTERWEIGHT 15.9t							ON OUTRIGGERS FULLY EXTENDED 7.2m COUNTERWEIGHT 15.9t						
Boom Angle in Degree	44.0m Boom + 9.9m Jib						Boom Angle in Degree	44.0m Boom + 17.7m Jib					
	3.5° Tilt		25° Tilt		45° Tilt			3.5° Tilt		25° Tilt		45° Tilt	
	R	W	R	W	R	W		R	W	R	W	R	W
80°	9.8	4.50	13.5	4.00	15.8	3.67	12.2	2.67	19.6	2.44	22.5	1.54	
75°	15.2	4.50	18.5	3.94	20.2	3.29	18.2	2.67	25.1	2.19	27.4	1.54	
70°	20.1	4.40	22.9	3.43	24.4	2.97	23.9	2.67	30.0	1.89	32.0	1.54	
65°	24.4	3.59	27.1	3.01	28.2	2.70	28.9	2.24	34.4	1.66	36.0	1.42	
60°	28.5	2.88	30.8	2.61	32.0	2.47	33.2	1.90	38.7	1.48	39.6	1.31	
55°	32.3	2.31	34.4	2.14	35.4	2.12	36.9	1.56	42.7	1.34	43.0	1.23	
50°	35.7	1.87	37.5	1.77	38.4	1.77	41.5	1.22	46.3	1.16	46.0	1.14	
45°	38.7	1.53	40.5	1.46	41.1	1.48	45.1	0.96	49.1	0.92	49.1	0.92	
40°	41.8	1.18	43.3	1.14			48.5	0.66	52.1	0.65			
35°	44.2	0.87	45.4	0.84									
30°	46.3	0.64	47.5	0.61									
25°	48.5	0.46											

ON OUTRIGGERS FULLY EXTENDED 7.2m COUNTERWEIGHT 15.9t							ON OUTRIGGERS FULLY EXTENDED 7.2m COUNTERWEIGHT 15.9t						
Boom Angle in Degree	35.87m Boom (telescoping mode I) + 9.9m Jib						Boom Angle in Degree	35.87m Boom (telescoping mode I) + 17.7m Jib					
	3.5° Tilt		25° Tilt		45° Tilt			3.5° Tilt		25° Tilt		45° Tilt	
	R	W	R	W	R	W		R	W	R	W	R	W
80°	7.8	5.60	11.2	4.67	13.5	3.76	10.0	3.58	16.7	2.58	20.3	1.67	
75°	12.1	5.60	15.4	4.53	17.2	3.61	15.1	3.58	21.3	2.36	24.4	1.67	
70°	16.2	5.60	19.1	3.99	20.6	3.37	19.8	3.24	25.5	2.12	28.1	1.65	
65°	19.9	4.74	22.6	3.57	23.7	3.10	24.1	2.70	29.4	1.91	31.4	1.57	
60°	23.4	4.12	25.8	3.22	26.8	2.89	28.2	2.31	33.2	1.73	34.4	1.49	
55°	26.7	3.62	28.9	2.95	29.7	2.73	32.0	2.02	36.3	1.58	37.5	1.42	
50°	29.6	3.20	31.7	2.74	32.3	2.60	35.7	1.80	39.3	1.47	39.9	1.37	
45°	32.3	2.74	34.1	2.58	34.7	2.50	38.7	1.63	42.1	1.38	42.4	1.33	
40°	34.7	2.22	36.6	2.12			41.8	1.49	44.5	1.31			
35°	37.2	1.82	38.4	1.75			44.2	1.18	46.6	1.14			
30°	39.0	1.51	40.2	1.47			46.3	0.94	48.5	0.92			
25°	40.8	1.28	41.8	1.25			48.5	0.77	49.7	0.75			
20°	42.1	1.11					50.0	0.64					
15°	43.3	0.99					50.9	0.55					

ON OUTRIGGERS FULLY EXTENDED 7.2m COUNTERWEIGHT 15.9t							ON OUTRIGGERS FULLY EXTENDED 7.2m COUNTERWEIGHT 15.9t						
Boom Angle in Degree	35.87m Boom (telescoping mode II) + 9.9m Jib						Boom Angle in Degree	35.87m Boom (telescoping mode II) + 17.7m Jib					
	3.5° Tilt		25° Tilt		45° Tilt			3.5° Tilt		25° Tilt		45° Tilt	
	R	W	R	W	R	W		R	W	R	W	R	W
80°	7.7	5.00	11.6	4.67	13.9	3.76	10.2	2.85	17.0	2.58	20.4	1.67	
75°	12.3	5.00	15.7	4.20	17.6	3.47	15.5	2.85	21.7	2.32	24.6	1.67	
70°	16.5	4.79	19.4	3.64	20.9	3.12	20.2	2.85	25.8	2.00	28.2	1.62	
65°	20.1	3.89	22.8	3.19	24.1	2.83	24.5	2.39	29.7	1.76	31.4	1.49	
60°	23.5	3.21	26.1	2.79	27.2	2.59	28.5	2.03	33.2	1.57	34.7	1.38	
55°	26.7	2.68	29.1	2.42	30.0	2.34	32.3	1.76	36.6	1.41	37.5	1.29	
50°	29.7	2.26	31.7	2.09	32.6	2.06	35.7	1.49	39.6	1.29	40.2	1.22	
45°	32.3	1.96	34.4	1.84	34.7	1.83	38.7	1.26	42.4	1.17	42.7	1.15	
40°	35.1	1.72	36.6	1.63			41.8	1.09	44.5	1.02			
35°	37.2	1.53	38.7	1.48			44.2	0.95	46.6	0.91			
30°	39.0	1.39	40.2	1.35			46.3	0.84	48.5	0.82			
25°	40.8	1.28	41.8	1.26			48.5	0.76	49.7	0.76			
20°	42.1	1.20					50.0	0.70					
15°	43.3	1.15					51.2	0.67					

R: Load radius (m)
W: Rated lifting capacity (Unit: x 1,000kg)

C

GT-800EX RATED LIFTING CAPACITIES

ON OUTRIGGERS FULLY EXTENDED 7.2m																				
COUNTER WEIGHT 7.4t																				
(UNIT:x1,000kg)																				
A \ B	11.5m		15.56m		19.62m				27.75m				35.87m				39.93m		44.0m	
	C		C		C		C		C		C		C		C		C		C	
3.0	68	71.9	75	47.0	78	40.0	78	20.0												
3.5	66	65.2	73	47.0	77	40.0	77	20.0												
4.0	63	57.0	71	47.0	75	40.0	75	20.0												
4.5	60	50.5	69	47.0	74	40.0	74	20.0	79	20.0	79	14.0								
5.0	57	45.2	67	44.8	72	38.4	72	20.0	78	20.0	78	14.0								
5.5	54	40.8	64	40.5	70	35.6	70	20.0	77	20.0	77	14.0								
6.0	50	37.2	62	36.8	69	33.2	69	20.0	76	20.0	76	14.0	80	14.0	80	8.0				
6.5	47	34.1	60	33.7	67	31.0	67	20.0	75	20.0	75	14.0	79	14.0	79	8.0				
7.0	43	31.4	58	30.6	66	29.1	66	20.0	74	20.0	74	14.0	78	14.0	78	8.0				
8.0	35	24.3	53	23.6	62	23.1	62	20.0	72	20.0	72	13.8	77	14.0	77	8.0	79	8.0	80	8.0
9.0	23	19.4	49	18.9	59	18.4	59	20.0	70	18.1	70	12.4	75	14.0	75	8.0	77	8.0	79	8.0
10.0			43	15.4	55	15.0	55	17.7	67	16.4	67	11.3	73	13.7	73	8.0	76	8.0	77	8.0
11.0			37	12.8	52	12.5	52	15.1	65	13.8	65	10.4	72	12.5	72	8.0	74	8.0	76	8.0
12.0			30	10.8	48	10.4	48	12.9	63	11.8	63	9.5	70	11.5	70	8.0	73	8.0	74	8.0
13.0			20	9.1	43	8.8	43	11.2	60	10.1	60	8.8	68	10.5	68	8.0	71	8.0	73	8.0
14.0					39	7.5	39	9.8	58	8.8	58	8.2	66	9.5	66	7.4	70	8.0	72	8.0
16.0					27	5.4	27	7.7	53	6.7	53	7.1	63	7.4	63	6.4	67	7.1	69	7.4
18.0									47	5.1	47	6.3	59	5.8	59	5.6	63	6.2	66	6.1
20.0									41	3.9	41	5.5	55	4.6	55	4.9	60	5.3	63	4.9
22.0									33	3.0	33	4.5	51	3.6	51	4.3	56	4.4	60	3.9
24.0									24	2.2	24	3.7	47	2.8	47	3.9	53	3.6	57	3.2
26.0													42	2.2	42	3.4	49	2.9	54	2.5
28.0													36	1.6	36	2.8	45	2.3	50	2.0
30.0													30	1.2	30	2.3	40	1.9	46	1.5
32.0													22	0.8	22	1.9	35	1.5	43	1.1
34.0																	29	1.1	38	0.7
36.0																	22	0.8		
D	0°															7°		31°		
Telescoping conditions (%)																				
Telescoping mode	I,II	I	I	I	II	I	II	I	II	I	II	I	II	II	II	I,II				
2nd boom	0	50	100	0	100	0	100	0	100	0	100	0	100	0	50	100				
3rd boom	0	0	0	33	33	66	66	100	100	100	100	100	100	100	100	100				
4th boom	0	0	0	33	33	66	66	100	100	100	100	100	100	100	100	100				
Top boom	0	0	0	33	33	66	66	100	100	100	100	100	100	100	100	100				

- A: Boom length (m)
- B: Load radius (m)
- C: Loaded boom angle (°)
- D: Minimum boom angle (°) for indicated length (no load)

JC

GT-800EX RATED LIFTING CAPACITIES

ON OUTRIGGERS FULLY EXTENDED 7.2m COUNTERWEIGHT 7.4t							ON OUTRIGGERS FULLY EXTENDED 7.2m COUNTERWEIGHT 7.4t						
Boom Angle in Degree	44.0m Boom + 9.9m Jib						Boom Angle in Degree	44.0m Boom + 17.7m Jib					
	3.5° Tilt		25° Tilt		45° Tilt			3.5° Tilt		25° Tilt		45° Tilt	
	R	W	R	W	R	W		R	W	R	W	R	W
80°	9.8	4.50	13.5	4.00	15.8	3.67	80°	12.2	2.67	19.6	2.44	22.5	1.54
75°	15.2	4.50	18.5	3.94	20.2	3.29	75°	18.2	2.67	25.1	2.19	27.4	1.54
70°	20.1	4.40	22.9	3.43	24.4	2.97	70°	23.9	2.67	30.0	1.89	32.0	1.54
65°	24.4	3.24	27.1	2.90	28.2	2.70	65°	28.9	2.14	34.4	1.66	36.0	1.42
60°	28.3	2.11	30.8	1.93	31.7	1.92	60°	33.2	1.29	38.7	1.21	39.6	1.14
55°	32.0	1.33	34.1	1.24	35.1	1.26	55°	37.2	0.70	42.4	0.68	43.0	0.65
50°	35.4	0.77	37.2	0.72	37.8	0.75							

ON OUTRIGGERS FULLY EXTENDED 7.2m COUNTERWEIGHT 7.4t							ON OUTRIGGERS FULLY EXTENDED 7.2m COUNTERWEIGHT 7.4t						
Boom Angle in Degree	35.87m Boom (telescoping mode I) + 9.9m Jib						Boom Angle in Degree	35.87m Boom (telescoping mode I) + 17.7m Jib					
	3.5° Tilt		25° Tilt		45° Tilt			3.5° Tilt		25° Tilt		45° Tilt	
	R	W	R	W	R	W		R	W	R	W	R	W
80°	7.8	5.60	11.2	4.67	13.5	3.76	80°	10.0	3.58	16.7	2.58	20.3	1.67
75°	12.1	5.60	15.4	4.53	17.2	3.61	75°	15.1	3.58	21.3	2.36	24.4	1.67
70°	16.2	5.60	19.1	3.99	20.6	3.37	70°	19.8	3.24	25.5	2.12	28.1	1.65
65°	19.9	4.74	22.6	3.57	23.7	3.10	65°	24.1	2.70	29.4	1.91	31.4	1.57
60°	23.4	3.60	25.8	3.22	26.8	2.89	60°	28.2	2.31	33.2	1.73	34.4	1.49
55°	25.9	2.55	28.8	2.33	29.7	2.31	55°	32.0	1.64	36.3	1.50	37.5	1.41
50°	29.4	1.80	31.4	1.67	32.3	1.68	50°	35.4	1.07	39.3	1.01	39.9	0.97
45°	32.0	1.24	34.1	1.17	34.4	1.19	45°	38.4	0.65	42.1	0.63	42.4	0.61
40°	34.7	0.82	36.3	0.78									
35°	36.9	0.50	38.1	0.48									

ON OUTRIGGERS FULLY EXTENDED 7.2m COUNTERWEIGHT 7.4t							ON OUTRIGGERS FULLY EXTENDED 7.2m COUNTERWEIGHT 7.4t						
Boom Angle in Degree	35.87m Boom (telescoping mode II) + 9.9m Jib						Boom Angle in Degree	35.87m Boom (telescoping mode II) + 17.7m Jib					
	3.5° Tilt		25° Tilt		45° Tilt			3.5° Tilt		25° Tilt		45° Tilt	
	R	W	R	W	R	W		R	W	R	W	R	W
80°	7.7	5.00	11.6	4.67	13.9	3.76	80°	10.2	2.85	17.0	2.58	20.4	1.67
75°	12.3	5.00	15.7	4.20	17.6	3.47	75°	15.5	2.85	21.7	2.32	24.6	1.67
70°	16.5	4.79	19.4	3.64	20.9	3.12	70°	20.2	2.85	25.8	2.00	28.2	1.62
65°	20.1	3.89	22.8	3.19	24.1	2.83	65°	24.5	2.39	29.7	1.76	31.4	1.49
60°	23.5	3.21	26.1	2.79	27.2	2.59	60°	28.5	2.03	33.2	1.57	34.7	1.38
55°	26.7	2.68	29.1	2.42	30.0	2.34	55°	32.3	1.76	36.6	1.41	37.5	1.29
50°	29.7	2.26	31.7	2.09	32.6	2.06	50°	35.7	1.49	39.6	1.29	40.2	1.22
45°	32.3	1.96	34.4	1.84	34.7	1.83	45°	38.7	1.26	42.4	1.17	42.7	1.15
40°	35.1	1.67	36.6	1.58			40°	41.8	1.02	44.5	0.98		
35°	37.2	1.35	38.7	1.29			35°	44.2	0.78	46.6	0.75		
30°	39.0	1.10	40.2	1.07			30°	46.3	0.60	48.5	0.58		
25°	40.8	0.92	41.8	0.89			25°	48.5	0.46	49.7	0.45		
20°	42.1	0.79											
15°	43.3	0.69											

R: Load radius (m)
W: Rated lifting capacity (Unit: x 1,000kg)

D

GT-800EX RATED LIFTING CAPACITIES

ON OUTRIGGERS FULLY EXTENDED 7.2m																				
COUNTER WEIGHT 5.1t																				
(UNIT:x1,000kg)																				
A \ B	11.5m		15.56m		19.62m				27.75m				35.87m				39.93m		44.0m	
	C		C		C		C		C		C		C		C		C			
3.0	68	71.9	75	47.0	78	40.0	78	20.0												
3.5	66	63.6	73	47.0	77	40.0	77	20.0												
4.0	63	55.6	71	47.0	75	40.0	75	20.0												
4.5	60	49.2	69	47.0	74	40.0	74	20.0	79	20.0	79	14.0								
5.0	57	44.1	67	43.7	72	38.4	72	20.0	78	20.0	78	14.0								
5.5	54	39.8	64	39.4	70	35.6	70	20.0	77	20.0	77	14.0								
6.0	50	36.2	62	35.9	69	33.2	69	20.0	76	20.0	76	14.0	80	14.0	80	8.0				
6.5	47	33.2	60	32.3	67	31.0	67	20.0	75	20.0	75	14.0	79	14.0	79	8.0				
7.0	43	28.6	58	27.8	66	27.2	66	20.0	74	20.0	74	14.0	78	14.0	78	8.0				
8.0	35	22.0	53	21.4	62	20.8	62	20.0	72	20.0	72	13.8	77	14.0	77	8.0	79	8.0	80	8.0
9.0	23	17.5	49	17.0	59	16.5	59	19.3	70	18.0	70	12.4	75	14.0	75	8.0	77	8.0	79	8.0
10.0			43	13.8	55	13.4	55	16.1	67	14.8	67	11.3	73	13.7	73	8.0	76	8.0	77	8.0
11.0			37	11.4	52	11.0	52	13.6	65	12.4	65	10.4	72	12.5	72	8.0	74	8.0	76	8.0
12.0			30	9.5	48	9.1	48	11.7	63	10.5	63	9.5	70	11.2	70	8.0	73	8.0	74	8.0
13.0			20	8.0	43	7.6	43	10.1	60	9.0	60	8.8	68	9.7	68	8.0	71	8.0	73	8.0
14.0					39	6.4	39	8.8	58	7.7	58	8.2	66	8.4	66	7.4	70	8.0	72	8.0
16.0					27	4.4	27	6.8	53	5.8	53	7.1	63	6.5	63	6.4	67	7.1	69	6.8
18.0									47	4.3	47	5.9	59	4.9	59	5.6	63	5.7	66	5.3
20.0									41	3.1	41	4.7	55	3.8	55	4.9	60	4.5	63	4.1
22.0									33	2.2	33	3.8	51	2.9	51	4.1	56	3.6	60	3.2
24.0									24	1.5	24	3.1	47	2.2	47	3.4	53	2.9	57	2.5
26.0													42	1.6	42	2.8	49	2.3	54	1.9
28.0													36	1.1	36	2.2	45	1.8	50	1.4
30.0													30	0.7	30	1.8	40	1.4	46	1.0
32.0															22	1.4	35	1.0	43	0.6
34.0																	29	0.7		
D	0°												23°		0°		21°		40°	
Telescoping conditions (%)																				
Telescoping mode	I,II	I	I	I	II	I	II	I	II	I	II	I	II	II	II	I,II				
2nd boom	0	50	100	0	100	0	100	0	100	0	100	0	100	0	50	100				
3rd boom	0	0	0	33	33	66	66	100	100	100	100	100	100	100	100	100				
4th boom	0	0	0	33	33	66	66	100	100	100	100	100	100	100	100	100				
Top boom	0	0	0	33	33	66	66	100	100	100	100	100	100	100	100	100				

- A: Boom length (m)
- B: Load radius (m)
- C: Loaded boom angle (°)
- D: Minimum boom angle (°) for indicated length (no load)



GT-800EX RATED LIFTING CAPACITIES

ON OUTRIGGERS FULLY EXTENDED 7.2m COUNTERWEIGHT 5.1t							ON OUTRIGGERS FULLY EXTENDED 7.2m COUNTERWEIGHT 5.1t						
Boom Angle in Degree	44.0m Boom + 9.9m Jib						Boom Angle in Degree	44.0m Boom + 17.7m Jib					
	3.5° Tilt		25° Tilt		45° Tilt			3.5° Tilt		25° Tilt		45° Tilt	
	R	W	R	W	R	W		R	W	R	W	R	W
80°	9.8	4.50	13.5	4.00	15.8	3.67	80°	12.2	2.67	19.6	2.44	22.5	1.54
75°	15.2	4.50	18.5	3.94	20.2	3.29	75°	18.2	2.67	25.1	2.19	27.4	1.54
70°	20.1	4.22	22.9	3.43	24.4	2.97	70°	23.9	2.67	30.0	1.89	32.0	1.54
65°	24.2	2.63	27.0	2.35	28.2	2.31	65°	28.6	1.64	34.4	1.50	36.0	1.37
60°	27.9	1.59	30.4	1.46	31.7	1.46	60°	32.6	0.87	38.4	0.83	39.6	0.78
55°	31.4	0.88	33.8	0.81	34.7	0.84							

ON OUTRIGGERS FULLY EXTENDED 7.2m COUNTERWEIGHT 5.1t							ON OUTRIGGERS FULLY EXTENDED 7.2m COUNTERWEIGHT 5.1t						
Boom Angle in Degree	35.87m Boom (telescoping mode I) + 9.9m Jib						Boom Angle in Degree	35.87m Boom (telescoping mode I) + 17.7m Jib					
	3.5° Tilt		25° Tilt		45° Tilt			3.5° Tilt		25° Tilt		45° Tilt	
	R	W	R	W	R	W		R	W	R	W	R	W
80°	7.8	5.60	11.2	4.67	13.5	3.76	80°	10.0	3.58	16.7	2.58	20.3	1.67
75°	12.1	5.60	15.4	4.53	17.2	3.61	75°	15.1	3.58	21.3	2.36	24.4	1.67
70°	16.2	5.60	19.1	3.99	20.6	3.37	70°	19.8	3.24	25.5	2.12	28.1	1.65
65°	20.0	4.37	22.6	3.57	23.7	3.10	65°	24.1	2.70	29.4	1.91	31.4	1.57
60°	23.3	2.95	25.8	2.64	26.8	2.58	60°	28.2	1.89	33.2	1.69	34.4	1.49
55°	26.3	1.98	28.7	1.81	29.6	1.81	55°	31.7	1.18	36.3	1.09	37.5	1.03
50°	29.3	1.30	31.4	1.20	32.0	1.22	50°	35.4	0.67	39.3	0.64	39.9	0.61
45°	32.0	0.79	33.8	0.74	34.4	0.77							

ON OUTRIGGERS FULLY EXTENDED 7.2m COUNTERWEIGHT 5.1t							ON OUTRIGGERS FULLY EXTENDED 7.2m COUNTERWEIGHT 5.1t						
Boom Angle in Degree	35.87m Boom (telescoping mode II) + 9.9m Jib						Boom Angle in Degree	35.87m Boom (telescoping mode II) + 17.7m Jib					
	3.5° Tilt		25° Tilt		45° Tilt			3.5° Tilt		25° Tilt		45° Tilt	
	R	W	R	W	R	W		R	W	R	W	R	W
80°	7.7	5.00	11.6	4.67	13.9	3.76	80°	10.2	2.85	17.0	2.58	20.4	1.67
75°	12.3	5.00	15.7	4.20	17.6	3.47	75°	15.5	2.85	21.7	2.32	24.6	1.67
70°	16.5	4.79	19.4	3.64	20.9	3.12	70°	20.2	2.85	25.8	2.00	28.2	1.62
65°	20.1	3.89	22.8	3.19	24.1	2.83	65°	24.5	2.39	29.7	1.76	31.4	1.49
60°	23.5	3.21	26.1	2.79	27.2	2.59	60°	28.5	2.03	33.2	1.57	34.7	1.38
55°	26.7	2.68	29.1	2.42	30.0	2.34	55°	32.3	1.76	36.6	1.41	37.5	1.29
50°	29.7	2.14	31.7	1.98	32.6	1.97	50°	35.7	1.35	39.6	1.25	40.2	1.20
45°	32.3	1.64	34.4	1.53	34.7	1.54	45°	38.7	0.97	42.1	0.92	42.4	0.89
40°	34.7	1.25	36.6	1.19			40°	41.8	0.68	44.5	0.65		
35°	37.2	0.96	38.4	0.92			35°	44.2	0.46	46.3	0.45		
30°	39.0	0.74	40.2	0.71									
25°	40.8	0.57	41.8	0.55									

R: Load radius (m)
W: Rated lifting capacity (Unit: x 1,000kg)

E

GT-800EX RATED LIFTING CAPACITIES

ON OUTRIGGERS FULLY EXTENDED 7.2m																						
COUNTER WEIGHT 0t (UNIT:x1,000kg)																						
B \ A	11.5m		15.56m		19.62m				27.75m				35.87m				39.93m		44.0m			
	C		C		C		C		C		C		C		C		C		C			
3.0	68	70.1	75	47.0	78	40.0	78	20.0														
3.5	66	60.2	73	47.0	77	40.0	77	20.0														
4.0	63	52.5	71	47.0	75	40.0	75	20.0														
4.5	60	46.5	69	46.1	74	40.0	74	20.0	79	20.0	79	14.0										
5.0	57	41.6	67	41.2	72	38.4	72	20.0	78	20.0	78	14.0										
5.5	54	37.5	64	36.9	70	35.6	70	20.0	77	20.0	77	14.0										
6.0	50	31.3	62	30.3	69	29.6	69	20.0	76	20.0	76	14.0	80	14.0	80	8.0						
6.5	47	26.3	60	25.4	67	24.8	67	20.0	75	20.0	75	14.0	79	14.0	79	8.0						
7.0	43	22.5	58	21.7	66	21.1	66	20.0	74	20.0	74	14.0	78	14.0	78	8.0						
8.0	35	17.1	53	16.5	62	15.9	62	19.0	72	17.5	72	13.8	77	14.0	77	8.0	79	8.0	80	8.0		
9.0	23	13.4	49	12.9	59	12.4	59	15.2	70	13.9	70	12.4	75	14.0	75	8.0	77	8.0	79	8.0		
10.0			43	10.2	55	9.7	55	12.5	67	11.3	67	11.3	73	12.0	73	8.0	76	8.0	77	8.0		
11.0			37	8.1	52	7.6	52	10.5	65	9.1	65	10.4	72	10.0	72	8.0	74	8.0	76	8.0		
12.0			30	6.4	48	6.0	48	8.7	63	7.4	63	9.4	70	8.2	70	8.0	73	8.0	74	8.0		
13.0			20	5.1	43	4.7	43	7.4	60	6.1	60	8.0	68	6.9	68	8.0	71	7.7	73	7.3		
14.0					39	3.7	39	6.2	58	5.1	58	6.8	66	5.8	66	7.2	70	6.6	72	6.2		
16.0					27	2.1	27	4.5	53	3.4	53	5.2	63	4.1	63	5.5	67	4.9	69	4.5		
18.0									47	2.3	47	3.9	59	2.9	59	4.2	63	3.7	66	3.3		
20.0									41	1.4	41	3.0	55	2.0	55	3.3	60	2.8	63	2.4		
22.0									33	0.7	33	2.2	51	1.3	51	2.5	56	2.1	60	1.7		
24.0											24	1.7	47	0.8	47	2.0	53	1.5	57	1.1		
26.0															42	1.5	49	1.0				
28.0															36	1.1	45	0.6				
30.0															30	0.7						
D	0°				27°				0°				45°				28°		43°		55°	
Telescoping conditions (%)																						
Telescoping mode	I,II		I	I	II	I	II	I	II	I	II	I	II	II	II	I,II						
2nd boom	0		50	100	0	100	0	100	0	100	0	100	0	50	100							
3rd boom	0		0	0	33	33	66	66	100	100	100	100	100	100	100							
4th boom	0		0	0	33	33	66	66	100	100	100	100	100	100	100							
Top boom	0		0	0	33	33	66	66	100	100	100	100	100	100	100							

- A: Boom length (m)
- B: Load radius (m)
- C: Loaded boom angle (°)
- D: Minimum boom angle (°) for indicated length (no load)

JE

GT-800EX RATED LIFTING CAPACITIES

ON OUTRIGGERS FULLY EXTENDED 7.2m COUNTERWEIGHT 0t						
Boom Angle in Degree	44.0m Boom + 9.9m Jib					
	3.5° Tilt		25° Tilt		45° Tilt	
	R	W	R	W	R	W
80°	9.8	4.50	13.5	4.00	15.8	3.67
75°	15.2	4.50	18.5	3.92	20.2	3.29
70°	19.4	2.56	22.5	2.22	24.1	2.15
65°	23.4	1.29	26.1	1.15	27.6	1.16

ON OUTRIGGERS FULLY EXTENDED 7.2m COUNTERWEIGHT 0t						
Boom Angle in Degree	44.0m Boom + 17.7m Jib					
	3.5° Tilt		25° Tilt		45° Tilt	
	R	W	R	W	R	W
80°	12.2	2.67	19.6	2.44	22.5	1.54
75°	18.2	2.67	25.1	2.19	27.4	1.54
70°	23.3	1.49	29.7	1.33	32.0	1.18

ON OUTRIGGERS FULLY EXTENDED 7.2m COUNTERWEIGHT 0t						
Boom Angle in Degree	35.87m Boom (telescoping mode I) + 9.9m Jib					
	3.5° Tilt		25° Tilt		45° Tilt	
	R	W	R	W	R	W
80°	7.8	5.60	11.2	4.67	13.5	3.76
75°	12.1	5.60	15.4	4.53	17.2	3.61
70°	16.2	4.48	19.1	3.72	20.6	3.37
65°	19.6	2.66	22.4	2.31	23.6	2.23
60°	22.9	1.52	25.5	1.36	26.5	1.35
55°	26.1	0.75			29.3	0.71

ON OUTRIGGERS FULLY EXTENDED 7.2m COUNTERWEIGHT 0t						
Boom Angle in Degree	35.87m Boom (telescoping mode I) + 17.7m Jib					
	3.5° Tilt		25° Tilt		45° Tilt	
	R	W	R	W	R	W
80°	10.0	3.58	16.7	2.58	20.3	1.67
75°	15.1	3.58	21.3	2.36	24.4	1.67
70°	19.9	2.84	25.5	2.12	28.1	1.65
65°	23.7	1.59	29.4	1.38	31.4	1.23

ON OUTRIGGERS FULLY EXTENDED 7.2m COUNTERWEIGHT 0t						
Boom Angle in Degree	35.87m Boom (telescoping mode II) + 9.9m Jib					
	3.5° Tilt		25° Tilt		45° Tilt	
	R	W	R	W	R	W
80°	7.7	5.00	11.6	4.67	13.9	3.76
75°	12.3	5.00	15.7	4.20	17.6	3.47
70°	16.5	4.79	19.4	3.64	20.9	3.12
65°	20.1	3.52	22.8	3.04	24.1	2.83
60°	23.3	2.38	25.9	2.12	27.1	2.06
55°	26.4	1.61	28.9	1.46	29.8	1.44
50°	29.3	1.06	31.4	0.97	32.3	0.98
45°	32.0	0.65	34.1	0.60	34.7	0.62

ON OUTRIGGERS FULLY EXTENDED 7.2m COUNTERWEIGHT 0t						
Boom Angle in Degree	35.87m Boom (telescoping mode II) + 17.7m Jib					
	3.5° Tilt		25° Tilt		45° Tilt	
	R	W	R	W	R	W
80°	10.2	2.85	17.0	2.58	20.4	1.67
75°	15.5	2.85	21.7	2.32	24.6	1.67
70°	20.2	2.85	25.8	2.00	28.2	1.62
65°	24.5	2.24	29.7	1.76	31.4	1.49
60°	28.4	1.45	33.2	1.28	34.7	1.18
55°	32.0	0.89	36.3	0.81	37.5	0.76
50°	35.4	0.48	39.3	0.45		

R: Load radius (m)
W: Rated lifting capacity (Unit: x 1,000kg)

F

GT-800EX RATED LIFTING CAPACITIES

ON OUTRIGGERS MID EXTENDED 4.8m																				
COUNTER WEIGHT 17.9t																				
(UNIT:x1,000kg)																				
A \ B	11.5m		15.56m		19.62m				27.75m				35.87m				39.93m		44.0m	
	C		C		C		C		C		C		C		C		C		C	
3.0	68	71.2	75	47.0	78	40.0	78	20.0												
3.5	66	62.6	73	47.0	77	40.0	77	20.0												
4.0	63	55.6	71	47.0	75	40.0	75	20.0												
4.5	60	49.8	69	47.0	74	40.0	74	20.0	79	20.0	79	14.0								
5.0	57	44.9	67	44.6	72	38.4	72	20.0	78	20.0	78	14.0								
5.5	54	40.8	64	40.5	70	35.6	70	20.0	77	20.0	77	14.0								
6.0	50	37.3	62	37.0	69	33.2	69	20.0	76	20.0	76	14.0	80	14.0	80	8.0				
6.5	47	33.1	60	32.4	67	31.0	67	20.0	75	20.0	75	14.0	79	14.0	79	8.0				
7.0	43	28.9	58	28.2	66	27.7	66	20.0	74	20.0	74	14.0	78	14.0	78	8.0				
8.0	35	22.7	53	22.2	62	21.7	62	20.0	72	20.0	72	13.8	77	14.0	77	8.0	79	8.0	80	8.0
9.0	23	18.4	49	17.9	59	17.5	59	20.0	70	18.1	70	12.4	75	14.0	75	8.0	77	8.0	79	8.0
10.0			43	14.7	55	14.4	55	17.0	67	15.8	67	11.3	73	13.7	73	8.0	76	8.0	77	8.0
11.0			37	12.3	52	12.0	52	14.5	65	13.4	65	10.4	72	12.5	72	8.0	74	8.0	76	8.0
12.0			30	10.4	48	10.1	48	12.5	63	11.4	63	9.5	70	11.5	70	8.0	73	8.0	74	8.0
13.0			20	8.9	43	8.6	43	10.9	60	9.9	60	8.8	68	10.5	68	8.0	71	8.0	73	8.0
14.0					39	7.3	39	9.6	58	8.6	58	8.2	66	9.3	66	7.4	70	8.0	72	8.0
16.0					27	5.3	27	7.6	53	6.6	53	7.1	63	7.3	63	6.4	67	7.1	69	7.4
18.0									47	5.1	47	6.3	59	5.8	59	5.6	63	6.2	66	6.1
20.0									41	3.9	41	5.4	55	4.6	55	4.9	60	5.3	63	4.9
22.0									33	3.0	33	4.5	51	3.6	51	4.3	56	4.4	60	4.0
24.0									24	2.3	24	3.7	47	2.9	47	3.9	53	3.6	57	3.2
26.0													42	2.2	42	3.4	49	2.9	54	2.6
28.0													36	1.7	36	2.8	45	2.4	50	2.0
30.0													30	1.3	30	2.4	40	1.9	46	1.6
32.0													22	0.9	22	2.0	35	1.6	43	1.2
34.0																	29	1.2	38	0.9
36.0																	22	0.9	34	0.6
D	0°																		31°	
Telescoping conditions (%)																				
Telescoping mode	I,II	I	I	I	II	I	II	I	II	I	II	I	II	I	II	I	II	I,II		
2nd boom	0	50	100	0	100	0	100	0	100	0	100	0	100	0	50	100	100			
3rd boom	0	0	0	33	33	66	66	100	100	100	100	100	100	100	100	100	100			
4th boom	0	0	0	33	33	66	66	100	100	100	100	100	100	100	100	100	100			
Top boom	0	0	0	33	33	66	66	100	100	100	100	100	100	100	100	100	100			

A: Boom length (m)
 B: Load radius (m)
 C: Loaded boom angle (°)
 D: Minimum boom angle (°) for indicated length (no load)

JF

GT-800EX RATED LIFTING CAPACITIES

ON OUTRIGGERS MID EXTENDED 4.8m COUNTERWEIGHT 17.9t						
Boom Angle in Degree	44.0m Boom + 9.9m Jib					
	3.5° Tilt		25° Tilt		45° Tilt	
	R	W	R	W	R	W
80°	9.8	4.50	13.5	4.00	15.8	3.67
75°	15.2	4.50	18.5	3.94	20.2	3.29
70°	20.1	4.40	22.9	3.43	24.4	2.97
65°	24.3	3.26	27.1	2.94	28.2	2.70
60°	28.0	2.18	30.5	2.00	31.7	1.99
55°	31.7	1.42	33.8	1.32	34.7	1.34
50°	35.1	0.87	36.9	0.82	37.8	0.84
45°	38.1	0.45			40.5	0.45

Boom Angle in Degree	44.0m Boom + 17.7m Jib					
	3.5° Tilt		25° Tilt		45° Tilt	
	R	W	R	W	R	W
80°	12.2	2.67	19.6	2.44	22.5	1.54
75°	18.2	2.67	25.1	2.19	27.4	1.54
70°	23.9	2.67	30.0	1.89	32.0	1.54
65°	28.8	2.20	34.4	1.66	36.0	1.42
60°	32.9	1.38	38.4	1.29	39.6	1.22
55°	36.9	0.79	42.1	0.77	43.0	0.73

ON OUTRIGGERS MID EXTENDED 4.8m COUNTERWEIGHT 17.9t						
Boom Angle in Degree	35.87m Boom (telescoping mode I) + 9.9m Jib					
	3.5° Tilt		25° Tilt		45° Tilt	
	R	W	R	W	R	W
80°	7.8	5.60	11.2	4.67	13.5	3.76
75°	12.1	5.60	15.4	4.53	17.2	3.61
70°	16.2	5.60	19.1	3.99	20.6	3.37
65°	19.9	4.74	22.6	3.57	23.7	3.10
60°	23.3	3.60	25.8	3.22	26.8	2.89
55°	26.4	2.60	28.7	2.39	29.7	2.37
50°	29.4	1.88	31.4	1.75	32.3	1.76
45°	32.0	1.34	33.8	1.26	34.4	1.28
40°	34.4	0.92	36.3	0.88		
35°	36.9	0.61	38.1	0.58		

Boom Angle in Degree	35.87m Boom (telescoping mode I) + 17.7m Jib					
	3.5° Tilt		25° Tilt		45° Tilt	
	R	W	R	W	R	W
80°	10.0	3.58	16.7	2.58	20.3	1.67
75°	15.1	3.58	21.3	2.36	24.4	1.67
70°	19.8	3.24	25.5	2.12	28.1	1.65
65°	24.1	2.70	29.4	1.91	31.4	1.57
60°	28.2	2.31	33.2	1.73	34.4	1.49
55°	32.0	1.71	36.6	1.57	37.5	1.42
50°	35.4	1.16	39.3	1.09	39.9	1.05
45°	38.4	0.75	41.8	0.72	42.4	0.70

ON OUTRIGGERS MID EXTENDED 4.8m COUNTERWEIGHT 17.9t						
Boom Angle in Degree	35.87m Boom (telescoping mode II) + 9.9m Jib					
	3.5° Tilt		25° Tilt		45° Tilt	
	R	W	R	W	R	W
80°	7.7	5.00	11.6	4.67	13.9	3.76
75°	12.3	5.00	15.7	4.20	17.6	3.47
70°	16.5	4.79	19.4	3.64	20.9	3.12
65°	20.1	3.89	22.8	3.19	24.1	2.83
60°	23.5	3.21	26.1	2.79	27.2	2.59
55°	26.7	2.68	29.1	2.42	30.0	2.34
50°	29.7	2.26	31.7	2.09	32.6	2.06
45°	32.3	1.96	34.4	1.84	34.7	1.83
40°	35.1	1.72	36.6	1.63		
35°	37.2	1.43	38.4	1.37		
30°	39.0	1.19	40.2	1.15		
25°	40.8	1.01	41.8	0.98		
20°	42.1	0.87				
15°	43.3	0.78				

Boom Angle in Degree	35.87m Boom (telescoping mode II) + 17.7m Jib					
	3.5° Tilt		25° Tilt		45° Tilt	
	R	W	R	W	R	W
80°	10.2	2.85	17.0	2.58	20.4	1.67
75°	15.5	2.85	21.7	2.32	24.6	1.67
70°	20.2	2.85	25.8	2.00	28.2	1.62
65°	24.5	2.39	29.7	1.76	31.4	1.49
60°	28.5	2.03	33.2	1.57	34.7	1.38
55°	32.3	1.76	36.6	1.41	37.5	1.29
50°	35.7	1.49	39.6	1.29	40.2	1.22
45°	38.7	1.26	42.4	1.17	42.7	1.15
40°	41.8	1.09	44.5	1.02		
35°	44.2	0.86	46.6	0.83		
30°	46.3	0.68	48.2	0.66		
25°	48.2	0.55	49.7	0.53		
20°	49.7	0.45				

R: Load radius (m)
W: Rated lifting capacity (Unit: x 1,000kg)

G

GT-800EX RATED LIFTING CAPACITIES

ON OUTRIGGERS MID EXTENDED 4.8m																				
COUNTER WEIGHT 15.9t																				
(UNIT:x1,000kg)																				
A \ B	11.5m		15.56m		19.62m				27.75m				35.87m				39.93m		44.0m	
	C		C		C		C		C		C		C		C		C		C	
3.0	68	70.1	75	47.0	78	40.0	78	20.0												
3.5	66	61.6	73	47.0	77	40.0	77	20.0												
4.0	63	54.6	71	47.0	75	40.0	75	20.0												
4.5	60	48.9	69	47.0	74	40.0	74	20.0	79	20.0	79	14.0								
5.0	57	44.1	67	43.8	72	38.4	72	20.0	78	20.0	78	14.0								
5.5	54	40.0	64	39.7	70	35.6	70	20.0	77	20.0	77	14.0								
6.0	50	35.8	62	35.0	69	33.2	69	20.0	76	20.0	76	14.0	80	14.0	80	8.0				
6.5	47	30.8	60	30.1	67	29.5	67	20.0	75	20.0	75	14.0	79	14.0	79	8.0				
7.0	43	26.8	58	26.2	66	25.6	66	20.0	74	20.0	74	14.0	78	14.0	78	8.0				
8.0	35	21.0	53	20.5	62	20.0	62	20.0	72	20.0	72	13.8	77	14.0	77	8.0	79	8.0	80	8.0
9.0	23	17.0	49	16.4	59	16.1	59	18.7	70	17.5	70	12.4	75	14.0	75	8.0	77	8.0	79	8.0
10.0			43	13.5	55	13.2	55	15.7	67	14.5	67	11.3	73	13.7	73	8.0	76	8.0	77	8.0
11.0			37	11.2	52	10.9	52	13.4	65	12.3	65	10.4	72	12.5	72	8.0	74	8.0	76	8.0
12.0			30	9.4	48	9.1	48	11.5	63	10.5	63	9.5	70	11.2	70	8.0	73	8.0	74	8.0
13.0			20	8.0	43	7.7	43	10.0	60	9.0	60	8.8	68	9.7	68	8.0	71	8.0	73	8.0
14.0					39	6.5	39	8.8	58	7.8	58	8.2	66	8.5	66	7.4	70	8.0	72	8.0
16.0					27	4.6	27	6.9	53	5.9	53	7.1	63	6.6	63	6.4	67	7.1	69	6.9
18.0									47	4.5	47	6.0	59	5.1	59	5.6	63	5.9	66	5.5
20.0									41	3.4	41	4.9	55	4.0	55	4.9	60	4.8	63	4.4
22.0									33	2.5	33	4.0	51	3.2	51	4.3	56	3.9	60	3.5
24.0									24	1.8	24	3.3	47	2.4	47	3.6	53	3.1	57	2.8
26.0													42	1.8	42	3.0	49	2.5	54	2.2
28.0													36	1.3	36	2.5	45	2.0	50	1.7
30.0													30	0.9	30	2.0	40	1.6	46	1.2
32.0													22	0.6	22	1.7	35	1.2	43	0.9
34.0																	29	0.9	38	0.6
36.0																	22	0.6		
D	0°												18°		0°		16°		36°	
Telescoping conditions (%)																				
Telescoping mode	I, II	I	I	II	I	II	I	II	II	I, II										
2nd boom	0	50	100	0	100	0	100	0	50	100										
3rd boom	0	0	0	33	33	66	66	100	100	100										
4th boom	0	0	0	33	33	66	66	100	100	100										
Top boom	0	0	0	33	33	66	66	100	100	100										

A: Boom length (m)
 B: Load radius (m)
 C: Loaded boom angle (°)
 D: Minimum boom angle (°) for indicated length (no load)

JG

GT-800EX RATED LIFTING CAPACITIES

ON OUTRIGGERS MID EXTENDED 4.8m COUNTERWEIGHT 15.9t						
Boom Angle in Degree	44.0m Boom + 9.9m Jib					
	3.5° Tilt		25° Tilt		45° Tilt	
	R	W	R	W	R	W
80°	9.8	4.50	13.5	4.00	15.8	3.67
75°	15.2	4.50	18.5	3.94	20.2	3.29
70°	20.1	4.39	22.9	3.43	24.4	2.97
65°	24.0	2.84	26.8	2.56	28.0	2.51
60°	27.8	1.83	30.3	1.68	31.4	1.68
55°	31.4	1.11	33.8	1.03	34.7	1.06
50°	34.7	0.59	36.9	0.55	37.8	0.58

ON OUTRIGGERS MID EXTENDED 4.8m COUNTERWEIGHT 15.9t						
Boom Angle in Degree	44.0m Boom + 17.7m Jib					
	3.5° Tilt		25° Tilt		45° Tilt	
	R	W	R	W	R	W
80°	12.2	2.67	19.6	2.44	22.5	1.54
75°	18.2	2.67	25.1	2.19	27.4	1.54
70°	23.9	2.67	30.0	1.89	32.0	1.54
65°	28.4	1.86	34.4	1.66	36.0	1.42
60°	32.6	1.09	38.1	1.03	39.3	0.97
55°			41.8	0.53		

ON OUTRIGGERS MID EXTENDED 4.8m COUNTERWEIGHT 15.9t						
Boom Angle in Degree	35.87m Boom (telescoping mode I) + 9.9m Jib					
	3.5° Tilt		25° Tilt		45° Tilt	
	R	W	R	W	R	W
80°	7.8	5.60	11.2	4.67	13.5	3.76
75°	12.1	5.60	15.4	4.53	17.2	3.61
70°	16.2	5.60	19.1	3.99	20.6	3.37
65°	19.9	4.53	22.6	3.57	23.7	3.10
60°	23.2	3.16	25.8	2.85	26.9	2.78
55°	26.4	2.22	28.6	2.04	29.6	2.02
50°	29.3	1.53	31.4	1.43	32.0	1.44
45°	32.0	1.02	33.8	0.97	34.4	0.99
40°	34.4	0.64	36.3	0.61		

ON OUTRIGGERS MID EXTENDED 4.8m COUNTERWEIGHT 15.9t						
Boom Angle in Degree	35.87m Boom (telescoping mode I) + 17.7m Jib					
	3.5° Tilt		25° Tilt		45° Tilt	
	R	W	R	W	R	W
80°	10.0	3.58	16.7	2.58	20.3	1.67
75°	15.1	3.58	21.3	2.36	24.4	1.67
70°	19.8	3.24	25.5	2.12	28.1	1.65
65°	24.1	2.70	29.4	1.91	31.4	1.57
60°	28.2	2.11	33.2	1.73	34.4	1.49
55°	31.7	1.40	36.3	1.29	37.5	1.22
50°	35.4	0.89	39.0	0.84	39.9	0.80
45°	38.4	0.49	41.8	0.48	42.4	0.47

ON OUTRIGGERS MID EXTENDED 4.8m COUNTERWEIGHT 15.9t						
Boom Angle in Degree	35.87m Boom (telescoping mode II) + 9.9m Jib					
	3.5° Tilt		25° Tilt		45° Tilt	
	R	W	R	W	R	W
80°	7.7	5.00	11.6	4.67	13.9	3.76
75°	12.3	5.00	15.7	4.20	17.6	3.47
70°	16.5	4.79	19.4	3.64	20.9	3.12
65°	20.1	3.89	22.8	3.19	24.1	2.83
60°	23.5	3.21	26.1	2.79	27.2	2.59
55°	26.7	2.68	29.1	2.42	30.0	2.34
50°	29.7	2.26	31.7	2.09	32.6	2.06
45°	32.3	1.84	34.4	1.73	34.7	1.74
40°	34.7	1.45	36.6	1.38		
35°	37.2	1.16	38.4	1.11		
30°	39.0	0.93	40.2	0.90		
25°	40.5	0.76	41.8	0.74		
20°	42.1	0.64				
15°	43.3	0.55				

ON OUTRIGGERS MID EXTENDED 4.8m COUNTERWEIGHT 15.9t						
Boom Angle in Degree	35.87m Boom (telescoping mode II) + 17.7m Jib					
	3.5° Tilt		25° Tilt		45° Tilt	
	R	W	R	W	R	W
80°	10.2	2.85	17.0	2.58	20.4	1.67
75°	15.5	2.85	21.7	2.32	24.6	1.67
70°	20.2	2.85	25.8	2.00	28.2	1.62
65°	24.5	2.39	29.7	1.76	31.4	1.49
60°	28.5	2.03	33.2	1.57	34.7	1.38
55°	32.3	1.76	36.6	1.41	37.5	1.29
50°	35.7	1.49	39.6	1.29	40.2	1.22
45°	38.7	1.16	42.1	1.09	42.7	1.07
40°	41.5	0.87	44.5	0.83		
35°	44.2	0.64	46.3	0.62		
30°	46.3	0.47	48.2	0.46		

R: Load radius (m)
W: Rated lifting capacity (Unit: x 1,000kg)

H

GT-800EX RATED LIFTING CAPACITIES

ON OUTRIGGERS MID EXTENDED 4.8m																				
COUNTER WEIGHT 7.4t																				
(UNIT:x1,000kg)																				
B \ A	11.5m		15.56m		19.62m				27.75m				35.87m				39.93m		44.0m	
	C		C		C		C		C		C		C		C		C		C	
3.0	68	65.5	75	47.0	78	40.0	78	20.0												
3.5	66	57.2	73	47.0	77	40.0	77	20.0												
4.0	63	50.5	71	47.0	75	40.0	75	20.0												
4.5	60	45.0	69	44.6	74	40.0	74	20.0	79	20.0	79	14.0								
5.0	57	36.2	67	35.1	72	34.4	72	20.0	78	20.0	78	14.0								
5.5	54	29.5	64	28.5	70	27.9	70	20.0	77	20.0	77	14.0								
6.0	50	24.6	62	23.8	69	23.2	69	20.0	76	20.0	76	14.0	80	14.0	80	8.0				
6.5	47	20.9	60	20.2	67	19.6	67	20.0	75	20.0	75	14.0	79	14.0	79	8.0				
7.0	43	18.0	58	17.4	66	16.8	66	19.9	74	18.5	74	14.0	78	14.0	78	8.0				
8.0	35	13.8	53	13.2	62	12.8	62	15.6	72	14.3	72	13.8	77	14.0	77	8.0	79	8.0	80	8.0
9.0	23	10.8	49	10.3	59	9.9	59	12.6	70	11.4	70	12.4	75	12.1	75	8.0	77	8.0	79	8.0
10.0			43	8.2	55	7.8	55	10.4	67	9.2	67	11.0	73	10.0	73	8.0	76	8.0	77	8.0
11.0			37	6.5	52	6.2	52	8.7	65	7.6	65	9.3	72	8.3	72	8.0	74	8.0	76	8.0
12.0			30	5.2	48	4.9	48	7.3	63	6.2	63	7.9	70	6.9	70	8.0	73	7.7	74	7.3
13.0			20	4.1	43	3.8	43	6.2	60	5.2	60	6.8	68	5.9	68	7.1	71	6.6	73	6.2
14.0					39	2.9	39	5.3	58	4.2	58	5.9	66	5.0	66	6.2	70	5.7	72	5.3
16.0					27	1.5	27	3.8	53	2.8	53	4.5	63	3.5	63	4.8	67	4.3	69	3.8
18.0									47	1.7	47	3.3	59	2.4	59	3.6	63	3.2	66	2.7
20.0									41	0.9	41	2.5	55	1.6	55	2.8	60	2.3	63	1.9
22.0											33	1.8	51	1.0	51	2.1	56	1.7	60	1.3
24.0											24	1.3			47	1.6	53	1.1		
26.0															42	1.1	49	0.7		
28.0															36	0.8				
D	0°		21°		0°		34°		0°		49°		34°		48°		58°			
Telescoping conditions (%)																				
Telescoping mode	I, II	I	I	I	II	I	II	I	II	I	II	I	II	II	II	I, II				
2nd boom	0	50	100	0	100	0	100	0	100	0	100	0	100	0	50	100				
3rd boom	0	0	0	33	33	66	66	100	100	100	100	100	100	100	100	100				
4th boom	0	0	0	33	33	66	66	100	100	100	100	100	100	100	100	100				
Top boom	0	0	0	33	33	66	66	100	100	100	100	100	100	100	100	100				

- A: Boom length (m)
- B: Load radius (m)
- C: Loaded boom angle (°)
- D: Minimum boom angle (°) for indicated length (no load)



GT-800EX RATED LIFTING CAPACITIES

ON OUTRIGGERS MID EXTENDED 4.8m COUNTERWEIGHT 7.4t						
Boom Angle in Degree	44.0m Boom + 9.9m Jib					
	3.5° Tilt		25° Tilt		45° Tilt	
	R	W	R	W	R	W
80°	9.8	4.50	13.5	4.00	15.8	3.67
75°	15.1	4.11	18.2	3.40	20.2	3.20
70°	19.0	2.13	22.0	1.85	23.7	1.80

ON OUTRIGGERS MID EXTENDED 4.8m COUNTERWEIGHT 7.4t						
Boom Angle in Degree	44.0m Boom + 17.7m Jib					
	3.5° Tilt		25° Tilt		45° Tilt	
	R	W	R	W	R	W
80°	12.2	2.67	19.6	2.44	22.5	1.54
75°	18.1	2.55	25.0	2.14	27.4	1.54

ON OUTRIGGERS MID EXTENDED 4.8m COUNTERWEIGHT 7.4t						
Boom Angle in Degree	35.87m Boom (telescoping mode I) + 9.9m Jib					
	3.5° Tilt		25° Tilt		45° Tilt	
	R	W	R	W	R	W
80°	7.8	5.60	11.2	4.67	13.5	3.76
75°	12.1	5.60	15.4	4.53	17.2	3.61
70°	15.9	3.85	18.9	3.22	20.5	3.02
65°	19.4	2.21	22.1	1.92	23.4	1.87
60°	22.8	1.17	25.3	1.04	26.4	1.05

ON OUTRIGGERS MID EXTENDED 4.8m COUNTERWEIGHT 7.4t						
Boom Angle in Degree	35.87m Boom (telescoping mode I) + 17.7m Jib					
	3.5° Tilt		25° Tilt		45° Tilt	
	R	W	R	W	R	W
80°	10.0	3.58	16.7	2.58	20.3	1.67
75°	15.1	3.58	21.3	2.36	24.4	1.67
70°	19.4	2.40	25.5	1.99	28.1	1.65
65°	23.4	1.25	28.9	1.10	31.1	0.98

ON OUTRIGGERS MID EXTENDED 4.8m COUNTERWEIGHT 7.4t						
Boom Angle in Degree	35.87m Boom (telescoping mode II) + 9.9m Jib					
	3.5° Tilt		25° Tilt		45° Tilt	
	R	W	R	W	R	W
80°	7.7	5.00	11.6	4.67	13.9	3.76
75°	12.3	5.00	15.7	4.20	17.6	3.47
70°	16.5	4.67	19.4	3.64	20.9	3.12
65°	19.7	3.05	22.6	2.64	24.1	2.52
60°	23.0	2.01	25.7	1.79	26.9	1.74
55°	26.2	1.30	28.6	1.18	29.6	1.17
50°	29.1	0.79	31.4	0.73	32.3	0.74

ON OUTRIGGERS MID EXTENDED 4.8m COUNTERWEIGHT 7.4t						
Boom Angle in Degree	35.87m Boom (telescoping mode II) + 17.7m Jib					
	3.5° Tilt		25° Tilt		45° Tilt	
	R	W	R	W	R	W
80°	10.2	2.85	17.0	2.58	20.4	1.67
75°	15.5	2.85	21.7	2.32	24.6	1.67
70°	20.2	2.85	25.8	2.00	28.2	1.62
65°	24.3	1.90	29.6	1.63	31.4	1.47
60°	28.0	1.17	32.9	1.04	34.4	0.96
55°	31.7	0.65	36.0	0.60	37.2	0.56

R: Load radius (m)
W: Rated lifting capacity (Unit: x 1,000kg)

I

GT-800EX RATED LIFTING CAPACITIES

ON OUTRIGGERS MID EXTENDED 4.8m																				
COUNTER WEIGHT 5.1t																				
(UNIT:x1,000kg)																				
B \ A	11.5m		15.56m		19.62m				27.75m				35.87m				39.93m		44.0m	
	C		C		C		C		C		C		C		C		C		C	
3.0	68	64.2	75	47.0	78	40.0	78	20.0												
3.5	66	55.9	73	47.0	77	40.0	77	20.0												
4.0	63	49.3	71	47.0	75	40.0	75	20.0												
4.5	60	40.8	69	39.5	74	38.7	74	20.0	79	20.0	79	14.0								
5.0	57	32.0	67	30.8	72	30.1	72	20.0	78	20.0	78	14.0								
5.5	54	25.9	64	25.0	70	24.3	70	20.0	77	20.0	77	14.0								
6.0	50	21.5	62	20.7	69	20.1	69	20.0	76	20.0	76	14.0	80	14.0	80	8.0				
6.5	47	18.2	60	17.5	67	16.9	67	20.0	75	18.6	75	14.0	79	14.0	79	8.0				
7.0	43	15.6	58	15.0	66	14.4	66	17.5	74	16.1	74	14.0	78	14.0	78	8.0				
8.0	35	11.8	53	11.3	62	10.8	62	13.6	72	12.3	72	13.8	77	13.1	77	8.0	79	8.0	80	8.0
9.0	23	9.1	49	8.6	59	8.3	59	10.9	70	9.7	70	11.6	75	10.5	75	8.0	77	8.0	79	8.0
10.0			43	6.7	55	6.3	55	8.9	67	7.7	67	9.5	73	8.5	73	8.0	76	8.0	77	8.0
11.0			37	5.1	52	4.7	52	7.4	65	6.2	65	8.0	72	7.0	72	8.0	74	7.8	76	7.4
12.0			30	3.9	48	3.5	48	6.1	63	4.9	63	6.7	70	5.7	70	7.1	73	6.5	74	6.1
13.0			20	2.9	43	2.5	43	5.0	60	3.9	60	5.7	68	4.6	68	6.0	71	5.5	73	5.0
14.0					39	1.7	39	4.2	58	3.1	58	4.8	66	3.8	66	5.1	70	4.6	72	4.2
16.0							27	2.9	53	1.8	53	3.5	63	2.5	63	3.8	67	3.3	69	2.9
18.0									47	0.9	47	2.5	59	1.6	59	2.8	63	2.3	66	1.9
20.0											41	1.7			55	2.1	60	1.6		
22.0											33	1.2			51	1.5	56	1.0		
24.0											24	0.7			47	1.0				
26.0															42	0.6				
D	0°		31°		0°		45°		19°		58°		41°		55°		64°			
Telescoping conditions (%)																				
Telescoping mode	I,II	I	I	II	I	II	I	II	I	II	I	II	I	II	I	II	I,II			
2nd boom	0	50	100	0	100	0	100	0	100	0	100	0	100	0	50	100				
3rd boom	0	0	0	33	33	66	66	100	100	100	100	100	100	100	100	100				
4th boom	0	0	0	33	33	66	66	100	100	100	100	100	100	100	100	100				
Top boom	0	0	0	33	33	66	66	100	100	100	100	100	100	100	100	100				

- A: Boom length (m)
- B: Load radius (m)
- C: Loaded boom angle (°)
- D: Minimum boom angle (°) for indicated length (no load)

J

GT-800EX RATED LIFTING CAPACITIES

ON OUTRIGGERS MID EXTENDED 4.8m																				
COUNTER WEIGHT 0t																				
(UNIT:x1,000kg)																				
A \ B	11.5m		15.56m		19.62m				27.75m				35.87m				39.93m		44.0m	
	C		C		C		C		C		C		C		C		C		C	
2.5																				
3.0	68	61.1	75	47.0	78	40.0	78	20.0												
3.5	66	53.1	73	47.0	77	40.0	77	20.0												
4.0	63	40.2	71	38.7	75	37.8	75	20.0												
4.5	60	29.4	69	28.1	74	27.3	74	20.0	79	20.0	79	14.0								
5.0	57	22.8	67	21.7	72	20.9	72	20.0	78	20.0	78	14.0								
5.5	54	18.2	64	17.3	70	16.6	70	20.0	77	18.6	77	14.0								
6.0	50	14.9	62	14.1	69	13.5	69	16.9	76	15.3	76	14.0	80	14.0	80	8.0				
6.5	47	12.4	60	11.7	67	11.1	67	14.3	75	12.8	75	14.0	79	13.8	79	8.0				
7.0	43	10.4	58	9.5	66	8.8	66	12.3	74	10.8	74	13.0	78	11.8	78	8.0				
8.0	35	7.0	53	6.3	62	5.8	62	9.0	72	7.5	72	9.8	77	8.5	77	8.0	79	8.0	80	8.0
9.0	23	4.8	49	4.3	59	3.7	59	6.7	70	5.4	70	7.5	75	6.3	75	7.9	77	7.2	79	6.7
10.0			43	2.8	55	2.3	55	5.1	67	3.8	67	5.8	73	4.7	73	6.2	76	5.6	77	5.1
11.0			37	1.6			52	4.0	65	2.7	65	4.6	72	3.5	72	5.0	74	4.4	76	3.9
12.0							48	3.0	63	1.8	63	3.7	70	2.6	70	4.0	73	3.5	74	3.0
13.0							43	2.3			60	2.9	68	1.9	68	3.2	71	2.7	73	2.3
14.0							39	1.7			58	2.3			66	2.6	70	2.1		
16.0											53	1.4			63	1.7				
18.0											47	0.7			59	1.0				
D	0°		36°		54°		30°		62°		46°		67°		58°		68°		72°	
Telescoping conditions (%)																				
Telescoping mode	I,II		I		I		II		I		II		I		II		II		I,II	
2nd boom	0		50		100		0		100		0		100		0		50		100	
3rd boom	0		0		0		33		33		66		66		100		100		100	
4th boom	0		0		0		33		33		66		66		100		100		100	
Top boom	0		0		0		33		33		66		66		100		100		100	

- A: Boom length (m)
- B: Load radius (m)
- C: Loaded boom angle (°)
- D: Minimum boom angle (°) for indicated length (no load)

GT-800EX RATED LIFTING CAPACITIES

ON OUTRIGGERS MIN EXTENDED 2.08m (UNIT:x1,000kg)							
11.5m Boom							
COUNTER WEIGHT							
A \ B		7.4t		5.1t		0t	
		C	K	C	L	C	M
3.0						68	13.2
3.5						66	9.4
4.0				63	13.0	63	6.9
4.5				60	10.3	60	5.0
5.0				57	8.3	57	3.7
5.5	54	8.6	54	6.7	54	54	2.6
6.0	50	7.2	50	5.5	50	50	1.8
6.5	47	6.0	47	4.4	47	47	1.1
7.0	43	5.0	43	3.6			
8.0	35	3.5	35	2.2			
9.0	23	2.3	23	1.2			
D	0°		0°		36°		
Telescoping conditions (%)							
Telescoping mode	I ,II		I ,II		I ,II		
2nd boom	0		0		0		
3rd boom	0		0		0		
4th boom	0		0		0		
Top boom	0		0		0		

A: Boom length (m)

B: Load radius (m)

C: Loaded boom angle (°)

D: Minimum boom angle (°) for indicated length (no load)

NOTES

1. Rated lifting capacities shown in the table are based on condition that the crane is set on firm level surface. Those above bold lines are based on crane strength and those below, on its stability.
2. Rated lifting capacities based on crane stability are according to ISO 4305 and DIN 15019 Part 2.
3. The mass of the hook (950 kg for 80t capacity, 470 kg for 40t capacity, 150 kg for 5.6 t capacity), slings and all similarly used load handling devices must be considered as part of the load and must be deducted from the lifting capacities.
4. For rated lifting capacity of single top, reduce the rated lifting capacities of relevant boom according to a weight reduction for auxiliary load handling equipment. Capacities of single top shall not exceed 5,600 kg including main hook.
5. Standard number of parts of line for each boom length is as shown below. Load per line should not surpass 54.9 kN {5,600 kgf} for main winch and auxiliary winch.

Boom length	11.5m	11.5m to 15.56m	15.56m to 19.62m	19.62m to 27.75m	27.75m to 44.0m	Jib / Single top
Number of parts of line	16	12	10	6	4	1

The lifting capacity data stored in the AUTOMATIC MOMENT LIMITER (AML) is based on the standard number of parts of line listed in the chart.

Maximum lifting capacity is restricted by the number of parts of line of AUTOMATIC MOMENT LIMITER (AML).

6. Without front jack extended, when the boom is within the Over-front, rated lifting capacities are different from those for the boom in the Over-side and Over-rear.

DIMENSIONS

